

Clay Roof Tiles





鉤泰工程
KWAN TAI ENGINEERING

Project: 20 Repluse Bay, Hong Kong

Subject: Supply and Installation of American Origin “LUDOWICI” Brand
Clay Roofing Tiles

Profile: Straight Barrel Mission



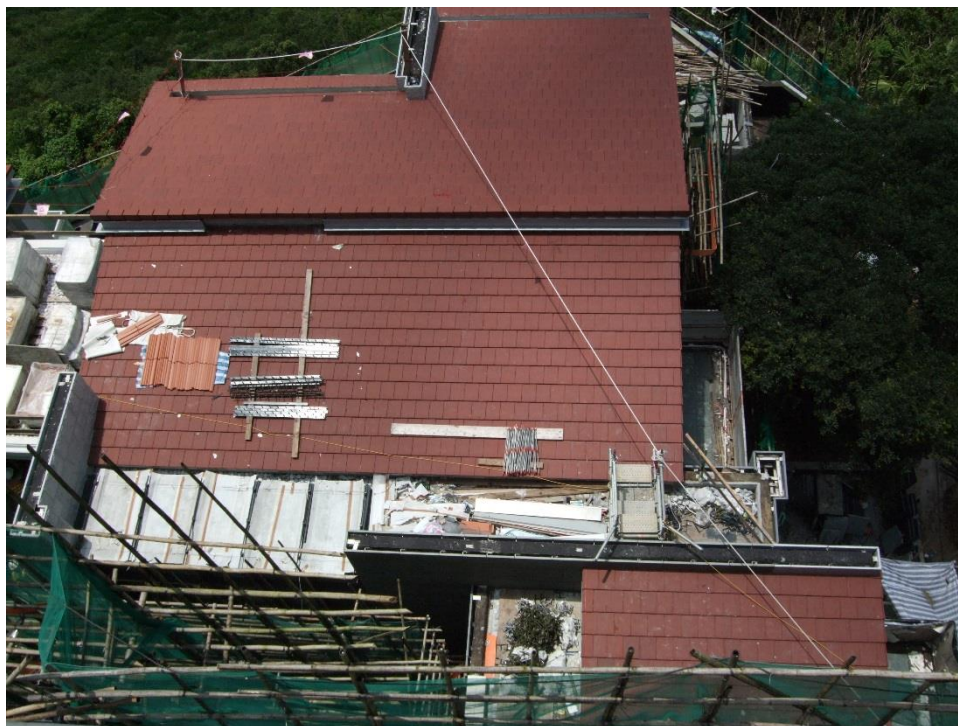
KWAN TAI ENGINEERING CO., LTD 鉤泰工程有限公司

Room 806, 8/F, Eastern Centre, 1065 King's Road, Quarry Bay, HK 香港鰂魚涌英皇道 1065 號東達中心 8 樓 806 室
Tel: 25418090 Fax: 28541182 Email: info@kwantaieng.com Website: www.kwantaieng.com



鈞泰工程
KWAN TAI ENGINEERING

Project: No.35 Mt. Kellett Road, Hong Kong
Subject: Supply and Installation of American Origin “LUDOWICI” Brand Clay Roofing Tiles
Profile: Americana **Color:** Slate Red



KWAN TAI ENGINEERING CO., LTD 鈞泰工程有限公司

Room 806, 8/F, Eastern Centre, 1065 King's Road, Quarry Bay, HK 香港鯉魚涌英皇道 1065 號東達中心 8 樓 806 室
Tel: 25418090 Fax: 28541182 Email: info@kwantaieng.com Website: www.kwantaieng.com



鈞泰工程
KWAN TAI ENGINEERING

Project: No.35 Mt. Kellett Road, Hong Kong
Subject: Supply and Installation of American Origin “LUDOWICI” Brand Clay Roofing Tiles
Profile: Americana **Color:** Dover Gray



KWAN TAI ENGINEERING CO., LTD 鈞泰工程有限公司

Room 806, 8/F, Eastern Centre, 1065 King's Road, Quarry Bay, HK 香港鯉魚涌英皇道 1065 號東達中心 8 樓 806 室
Tel: 25418090 Fax: 28541182 Email: info@kwantaieng.com Website: www.kwantaieng.com



鈞泰工程
KWAN TAI ENGINEERING

Project: No.78 Mt. Kellett Road, Hong Kong
Subject: Supply and Installation of American Origin “LUDOWICI” Brand Clay Roofing Tiles
Profile: Spanish 13 1/4 Tile **Color:** Briar Brown



KWAN TAI ENGINEERING CO., LTD 鈞泰工程有限公司

Room 806, 8/F, Eastern Centre, 1065 King's Road, Quarry Bay, HK 香港鯉魚涌英皇道 1065 號東達中心 8 樓 806 室
Tel: 25418090 Fax: 28541182 Email: info@kwantaieng.com Website: www.kwantaieng.com



鈞泰工程
KWAN TAI ENGINEERING

Project: No.78 Mt. Kellett Road, Hong Kong
Subject: Supply and Installation of American Origin “LUDOWICI” Brand
Clay Roofing Tiles
Profile: Spanish 13 1/4 Tile **Color:** Briar Brown



KWAN TAI ENGINEERING CO., LTD 鈞泰工程有限公司

Room 806, 8/F, Eastern Centre, 1065 King's Road, Quarry Bay, HK 香港鯉魚涌英皇道 1065 號東達中心 8 樓 806 室
Tel: 25418090 Fax: 28541182 Email: info@kwantaieng.com Website: www.kwantaieng.com



鈞泰工程
KWAN TAI ENGINEERING

Project: No.1 Peak Road, Hong Kong
Subject: Supply and Installation of French Origin “TBF” Brand
Clay Roofing Tiles
Profile: Romane **Color:** Mixed Tone (Charente Pink and Straw White)



KWAN TAI ENGINEERING CO., LTD 鈞泰工程有限公司

Room 806, 8/F, Eastern Centre, 1065 King's Road, Quarry Bay, HK 香港鯉魚涌英皇道 1065 號東達中心 8 樓 806 室
Tel: 25418090 Fax: 28541182 Email: info@kwantaieng.com Website: www.kwantaieng.com



鉤泰工程
KWAN TAI ENGINEERING

Project: No.1 Peak Road, Hong Kong
Subject: Supply and Installation of French Origin “TBF” Brand
Clay Roofing Tiles
Profile: Romane **Color:** Mixed Tone (Charente Pink and Straw White)





鈞泰工程
KWAN TAI ENGINEERING

Project: Tourist District Enhancement Programme, The Peak

Subject: Supply and Installation of American “LUDOWICI” Brand Roof Tiles





鈞泰工程
KWAN TAI ENGINEERING

Project: 33 Island Road
Subject: Supply and Installation of French Origin “TBF” Brand Clay Roofing Tiles
Color: Tudor Brown



KWAN TAI ENGINEERING CO., LTD 鈞泰工程有限公司

Room 806, 8/F, Eastern Centre, 1065 King's Road, Quarry Bay, HK 香港鯉魚涌英皇道 1065 號東達中心 8 樓 806 室
Tel: 25418090 Fax: 28541182 Email: info@kwantaieng.com Website: www.kwantaieng.com



鈞泰工程
KWAN TAI ENGINEERING

Project: Fortress Hill, Tai Po (倚龍山莊)
Subject: Supply and Installation of French Origin "TBF" Brand Clay Roofing Tiles
Profile: Romane C **Color:** Red **Completion:** 1997



KWAN TAI ENGINEERING CO., LTD 鈞泰工程有限公司

Room 806, 8/F, Eastern Centre, 1065 King's Road, Quarry Bay, HK 香港鯉魚涌英皇道 1065 號東達中心 8 樓 806 室
Tel: 25418090 Fax: 28541182 Email: info@kwantaieng.com Website: www.kwantaieng.com



鈞泰工程
KWAN TAI ENGINEERING

Project: 22 Middle Gap Road (中峽道 22 號)
Subject: Supply and Installation of French Origin “TBF” Brand Clay Roofing Tiles
Profile: Canalaverou 40 **Color:** Red **Completion:** 2000



KWAN TAI ENGINEERING CO., LTD 鈞泰工程有限公司

Room 806, 8/F, Eastern Centre, 1065 King's Road, Quarry Bay, HK 香港鯉魚涌英皇道 1065 號東達中心 8 樓 806 室
Tel: 25418090 Fax: 28541182 Email: info@kwantaieng.com Website: www.kwantaieng.com



鈞泰工程
KWAN TAI ENGINEERING

Project : Discovery Bay North Development N1a, N1b, N1f & N1g

Profile : Romane-Canal

Color : Natural Red, Charente Pink, Rustic Brown

Completion: 2001





鈞泰工程
KWAN TAI ENGINEERING

Project: Constellation Cove, TPTL 150 Tai Po Kau, N.T. (滌濤山)
Subject: Supply and Installation of French Origin "TBF" Brand Clay Roofing Tiles
Profile: Romane **Color:** Natural **Completion:** 2001





鈞泰工程
KWAN TAI ENGINEERING

Project: Bellagio, Sham Tseng, N.T.
Subject: Supply and Installation of French Origin "TBF" Brand Clay Roofing Tiles
Profile: Canalaverou 40 **Color:** Rustic Brown **Completion:** 2002



KWAN TAI ENGINEERING CO., LTD 鈞泰工程有限公司

Room 806, 8/F, Eastern Centre, 1065 King's Road, Quarry Bay, HK 香港鯉魚涌英皇道 1065 號東達中心 8 樓 806 室
Tel: 25418090 Fax: 28541182 Email: info@kwantaieng.com Website: www.kwantaieng.com



鈞泰工程
KWAN TAI ENGINEERING

Project: Mei Wo Circuit, Shatin, N.T,
Subject: Supply and Installation of French Origin “TBF” Brand Clay Roofing Tiles
Profile: Romane **Color:** Black Coffe **Completion:** 2002



KWAN TAI ENGINEERING CO., LTD 鈞泰工程有限公司

Room 806, 8/F, Eastern Centre, 1065 King's Road, Quarry Bay, HK 香港鯉魚涌英皇道 1065 號東達中心 8 樓 806 室
Tel: 25418090 Fax: 28541182 Email: info@kwantaieng.com Website: www.kwantaieng.com



鈞泰工程
KWAN TAI ENGINEERING

Project: 57 Shouson Hill Road, HK (House G & H)
Subject: Supply and Installation of French Origin “TBF” Brand Clay Roofing Tiles
Profile: Canalaverou 40 Color: Mixed Tone Languedoc **Completion:** 2003



KWAN TAI ENGINEERING CO., LTD 鈞泰工程有限公司

Room 806, 8/F, Eastern Centre, 1065 King's Road, Quarry Bay, HK 香港鯉魚涌英皇道 1065 號東達中心 8 樓 806 室
Tel: 25418090 Fax: 28541182 Email: info@kwantaieng.com Website: www.kwantaieng.com



鈞泰工程
KWAN TAI ENGINEERING

Project: 57 Shouson Hill Road, HK (House G & H)
Subject: Supply and Installation of French Origin “TBF” Brand Clay Roofing Tiles
Profile: Canalaverou 40 Color: Mixed Tone Languedoc Completion: 2003



KWAN TAI ENGINEERING CO., LTD 鈞泰工程有限公司

Room 806, 8/F, Eastern Centre, 1065 King's Road, Quarry Bay, HK 香港鯉魚涌英皇道 1065 號東達中心 8 樓 806 室
Tel: 25418090 Fax: 28541182 Email: info@kwantaieng.com Website: www.kwantaieng.com



鈞泰工程
KWAN TAI ENGINEERING

Shop Drawings



鈞泰工程
KWAN TAI ENGINEERING

Job Reference

Past and Current Significant Job Reference for the Supply and Installation of 'TBF' Roofing Tiles

Updated: Jul 18

P.1

<u>Item</u>	<u>Architect</u>	<u>Main-contractor</u>	<u>Project Location</u>	<u>Area/m2</u>	<u>Completion</u>
1/	Ma Leung & Associates	Sanfield Const., Co Ltd	Palm Spring, Wo Shang Wai	3,000	93-95
2/	CYS Associates (HK) Ltd	Hansion Const., Co Ltd	Discovery Bay Ph VII Area 8A	3,500	Jan 95
3/	Wong & Ouyang (HK) Ltd	Tat Lee Const., Co Ltd	HK Gold Coast, Ph 2D Carpark & coverwalkway	2,900	Mar 95
4/	Wong Tung & Partners Ltd	Yau Lee Const., Co Ltd	Parc Royale, Shatin	950	Aug-95
5/	CYS Associates (HK) Ltd	Keneva Const., Co Ltd	Res.Area at Fanling 116, NT	800	Oct 96
6/	HK Housing Authority	China States Const.,Eng Corp	Tze Lok Estate Phase 3	650	Nov 96
7/	CYS Associates (HK) Ltd	China States Const.,Eng Corp	Res.Area at Tai Po 136	400	Mar 97
8/	Wheelock Properties Ltd	Grand Choice Const.,Co Ltd	Fortress Hill, Tai Po	10,000	Aug 97
9/	CYS Associates (HK) Ltd	Hansion Const., Co Ltd	Discovery Bay - La Serene	2,000	Oct 98
10/	HK Housing Authority	Shun Shing Const., Co Ltd	Residential Area at Ping Chau	200	Jun 99
11/	Ronald Lu & Partners (HK) Ltd	Hien Lee Const., Co Ltd	Delux Residential at 25 Clear Water Bay Road	100	Aug 99
12/	Paliburg Development Consultants	Chatwin Const., Co Ltd	Residential Area at Unlong 450 Town Park Road	3,200	Jan 00
13/	P&T Group	Gammon/Asia Build Ltd	Delux Res at 22 Middle Gap Rd	450	Feb 00
14/	HK Housing Authority	Paul.Y-ITC General Consultants Ltd	Car Park Slanting Roofing at Shatin 14B Ph 2	250	Dec 01
15/	Hsin Yieh Architects & Engineerings Ltd	Hien Lee Eng. Co Ltd	Res Area at Kau Wa kenda Kwai Chung	146	Mar 02
16/	P&T Group	Wing Bo Const., Co Ltd	Delux Res at 70 Deep Water Bay Rd	280	May 02
17/	P&T Group	Win House Const., Co Ltd	Constellation Cove, Tai Po	5,000	Jun 02

Past and Current Significant Job Reference for the Supply and Installation of 'TBF' Roofing Tiles

Updated: Jul 18

P.2

<u>Item</u>	<u>Architect</u>	<u>Main-contractor</u>	<u>Project Location</u>	<u>Area/m2</u>	<u>Completion</u>
18/	Sino In-house Architect	Fung Yuen Const., Co Ltd	Delux Res at 15 Mt Cameron Rd	340	Jun 02
19/	Ho & Partners Architects Eng. & Development Consultants Ltd	Tysan Bldg Const., Co Ltd	Res Area at Mei Wo Circuit	160	Aug 02
20/	CYS Associates (HK) Ltd	Hansion Const., Co Ltd	Houses at Discovery Bay Phase N1 ab,fg & sales office	10,000	Dec 02
21/	Wong Tung & Partners Ltd	Hip Hing Const., Co Ltd	Club Hse at Bel Air, Cyber Port	200	Feb 03
22/	Wong Tung & Partners Ltd	China States Const.,Eng Corp	Res at Wong Ma Kok, Stanley	160	Feb 03
23/	Wong & Ouyang (HK) Ltd	Kumagai Gumi	Bellagio Ph 1, Sham Tseng	Domes	Apr 03
24/	Andrew Lee King Fun & Associates	Lidell Construction Co Ltd	Delux Res at 3 Coomb Rd, Peak	440	May 03
25/	HK Housing Authority	Wing Hong Contractors Ltd	Shatin 31A, Hin King St (HOS)	1,700	Jun 03
26/	P&T Group	Hip Hing Const., Co Ltd	Delux Res at 57 Shouson Hill Rd	420	Jun 03
27/	CYS Associates (HK) Ltd	Hansion Const., Co Ltd	Houses at Discovery Bay at North Club House	3,200	Aug 03
28/	Palburg Development Consultants Ltd	China States Const., Eng Corp	Residential at Wong Ma Kok Rd Stanley	200	Aug 03
38/	P.K.Ng & Associates	Tai Yieh Const., Co Ltd	Delux Res at 33 Island Rd HK	1,000	Oct 05
30/	HK Macau Projects Consultants Co., Ltd	in house	Hse A2 at 12 South Bay Road, HK	1 job	Jan 05
31/	Ho & Partners Architects Eng.	HK Construction (Holdings) Ltd	861 - 871 Lai Chi Kok Road, Kln	760 m2	Jan 05
32/	Ma Leung & Associates (HK) Ltd	HK Construction Co., Ltd	Residential at 432 Hoi Chu Rd, Tuen Mun, NT	1 job	Feb 05

Past and Current Significant Job Reference for the Supply and Installation of 'TBF' Roofing Tiles

Updated: Jul 18

P.3

<u>Item</u>	<u>Architect</u>	<u>Main-contractor</u>	<u>Project Location</u>	<u>Area/m2</u>	<u>Completion</u>
33/	Wong & Ouyang (HK) Ltd	Gammon Skanska Limited	Res at Bellagio Ph 2, Sham Tseng	Domes	May 05
34/	CYS Associates (HK) Ltd	Hansion Contractors Ltd	DB13, N1c, at Discovery Bay	47	Dec 05
35/	Designcorp International Ltd	Deson Development Ltd	1 Peak Road, HK	500	Jan 06
36/	JADL design Limited	Hansion Const., Co. Ltd	78 Mt Kellet Road, Peak, HK	420	May 06
37/	Projexasia Ltd	Projexasia Ltd	House at 3 Coombe Road	50	Sep 06
38/	CYS Associates (HK) Ltd	Entasis Ltd	A&A Works to DB Town Plaza, Area 9A, Discovery Bay	750	Mar 07
39/	Aedas Lpt Ltd	Ngo Kee Const., Co. Ltd	Hotel & Resort Development at Venetian, Macau	7,800	Aug 07
40/	Arthur CS Kwok Architect & Associates Ltd	B.L.Wong & Co. Ltd	Hse at 22 Big Wave Road, Shek O	650	Dec 07
41/	LWK & Partner (HK) Ltd	Goldfield Bldg Contractors Ltd	3 black's Link, HK	400	Jul 11
42/	LWK & Partner (HK) Ltd	Deson Development Limited	No. 93 Repluse Bay	151	Jul 11
43/	Dennis Lau & Ng Chun Man Architects & Engineers (HK) Ltd	Ho Hi Mong Invest. Co. Ltd	No. 1 Serenity Path	100	Dec 14
44/	LWK & Partners (HK) Ltd	Deson Development Limited	No. 48 Stubbs Road	1,100	Mar 15
45/	DLN Architects & Engineers	New World Const. Co. Ltd	12101 Pak Kong	3,300	Apr 15
46/	Design Corporation Ltd	Ever Const. Co. Ltd	13 Big Wave Road	602	Jul 16
47/	P&T Group	Sundart Group	1A/B Discovery Bay	1,540	Oct 16

Past and Current Significant Job Reference for the Supply and Installation of U.S Origin 'Lodowici' Clay Roofing Tiles

Updated: Jul 19

P.1

<u>Item</u>	<u>Architect</u>	<u>Main-contractor</u>	<u>Project Location</u>	<u>Area/m2</u>	<u>Completion</u>
1/	Architectural Services Department	Excelton Engineering Ltd	The Peak - Tourist District Enhancement Programme	60	Mar 07
2/	Handi Design Ltd	Hansion Const., Co Ltd	35 Mt Kellet Road, HK	800	Mar 08
3/	JADL design Limited	Hansion Const., Co Ltd	78 Mt Kellet Road, HK	420	May 06
4/	Chung's Properties Ltd	Designcorp Int'l Ltd	37 Island Road, Deep Water Bay	500	Nov 09
5/	Ronald Lu & Partners (HK) Ltd	Hien Lee Const. Co. Ltd	20 Repluse Bay	302	Jul 13
6/	Wong & Ouyang (HK) Ltd	Gammon Const. Ltd	No. 8 Mt. Nicholson	660	May 15
7/	LWK & Partners (HK) Ltd	Gammon Const. Ltd	No.1 Plantation Road	1807	In progress