

BOWEN PRO Fire Protection Solutions

We provide a wide range of products for residential and commercial internal wall and ceiling linings includes fire protection board, cement board, plasterboard and materials.

Exclusive Distributor:



Tel: 2541 8090
info@kwantaieng.com

Room 806, 8/F, Eastern Centre,
1065 King's Road, Quarry Bay

Exclusive Distributor:

Kwan Tai Engineering



PROFILE

PR
LE

At Bowen Pro, we are dedicated to providing top-of-the-line fire protection solutions to safeguard your properties and ensure the safety of its occupants. With to foci on quality, reliability, and innovation, we offer a comprehensive range of products designed to meet the highest standards of fire resistance.

Our extensive product lineup includes Fire Protection Boards, Gypsum Plaster Boards, Cement Boards, and Rock wool insulation. These products have been meticulously chosen for their exceptional fire-resistant properties, ensuring optimal protection against the spread of flame and heat.

When you choose Bowen Pro, you can trust that you are investing in industry-leading material that undergo rigorous testing to meet and exceed fire safety regulations. Our Fire Protection Boards offer reliable fire barriers, while Gypsum Plaster Boards provide both fire resistance and excellent acoustic insulation. Cement Boards offer durability and moisture resistance, making them ideal for high-traffic and wet areas. Additionally, our Rock wool insulation provides superior thermal and fire protection, enhancing the energy efficiency of your properties.

WHY BOWEN PRO



INNOVATION

Each Bowen Pro product embodies the latest technological advancements, reflecting our commitment to innovation-driven solutions.

RELIABILITY

Building on our legacy of trust, Bowen Pro products are engineered to excel industry standards, ensuring reliable performance and peace of mind to users.

SUSTAINABILITY

We understand the importance of sustainable construction. Bowen Pro products are crafted with eco-friendly materials, contributing to greener buildings and a better tomorrow.

VERSATILITY

Our product range caters to diverse construction needs, from safety to aesthetics, enabling architects, builders, and homeowners to realize their aspirations for better living.

CUSTOMER-CENTERED

Bowen Pro is more than a product category; satisfaction guaranteed customer service is rendered throughout with technical support, from conception to completion.

VALUE

FIRE PROTECTION BOARD

Specifically designed to enhance the fire resistance of buildings and structures. These boards are made from non-combustible material such as calcium silicate and crystal slurry, providing excellent insulation and protection against the spread of fire.

CEMENT BOARD

Dimensionally stable, resistant to mold and mildew, and provide a solid base for tiles and stone finishes. They are commonly used in high-traffic areas and wet environments, offering both durability and fire safety.

GYPSUM PLASTER BOARD

Inherently fire-resistant and acts as a barrier to the spread of flames, making it an ideal material for walls and ceilings. Additionally, gypsum boards offer good acoustic insulation and are easy to install, making them popular in residential, commercial, institutional and industrial buildings.

ROCK WOOL

Excellent thermal insulation properties and is non-combustible, it is commonly used for fireproofing applications, as insulation for walls, roofs, and HVAC systems, providing an effective barrier against heat transfer and improving energy efficiency.

FIRE PROTECTION BOARD

Advanced Fire Safety for Every Structure

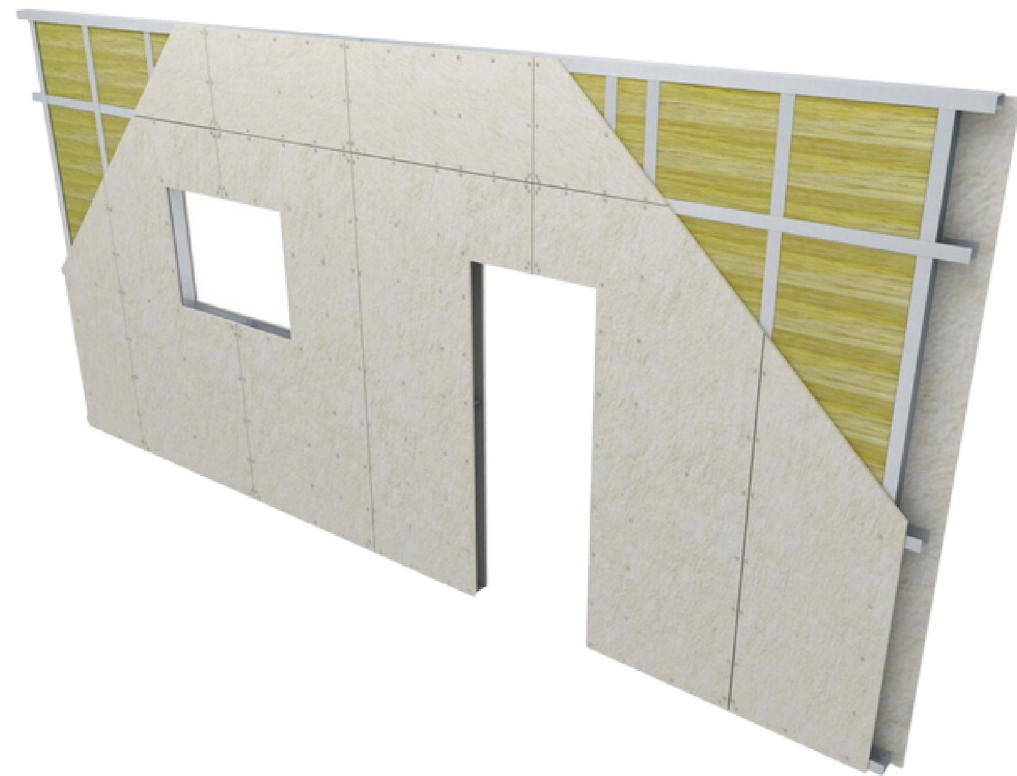
At Bowen Pro, we are dedicated to providing innovative solutions for modern construction challenges. Our Fire Protection Board is a testament to our commitment towards safety, innovation, and sustainability.



Diagnosis of Bowen Pro Fire Protection Board:

- **Eco-Friendly:** The Fire Protection Board is designed with a strong emphasis on environmental responsibility. It is crafted using eco-friendly materials, ensuring that your construction projects align with sustainable practices.
- **Toxic Emission-Free:** Safety is accorded utmost priority. The Fire Protection Board is entirely free from formaldehyde and toxic emissions, guaranteeing a healthy and safe indoor environment for occupants.
- **Composition:** The off-white Fire Protection Board is expertly engineered from a matrix of fire-resistant minerals including calcium, and silicate. It is further reinforced with carefully selected cellulose fibers and special fillers, forming a formidable shield against fire hazards.
- **Fire-Proof:** More than a preventive measure - it's a reliable solution. It conforms to the highest standards of non-combustibility when tested under BS 476-22:1987 fire tests on building materials and structures, offering users peace of mind in the face of fire-related risks.

- **Versatile Applications:** The advantages of Bowen Pro Fire Protection Board extend beyond fire resistance. It's an ideal choice for constructions that require resistance to dampness and high humidity.
- **Water Soluble Additives:** Bowen Pro Fire Protection Board does not contain any water-soluble additives. This ensures the durability and long-lasting performance for projects application.
- **Moisture Management:** The unique composition of the Fire Protection Board allows it to absorb moisture without its function being compromised. The absorbed water in the calcium silicate matrix fiber is fully recovered upon drying, maintaining the board's structural integrity.



APPLICATIONS

The Fire Protection Board finds a wide range of applications, including:



Partition & External Wall

Build fire-resistant partitions and external walls that protect both property and lives.



Ceiling

Install fire-resistant ceilings that contribute to the overall safety of the structure.



Ductwork

Ensure fire safety within ductwork, preventing the spread of flames and smoke.



E&M Service Enclosures

Create secured enclosures for electrical and mechanical services, minimizing fire-related risks.



Cavity & Smoke Barrier

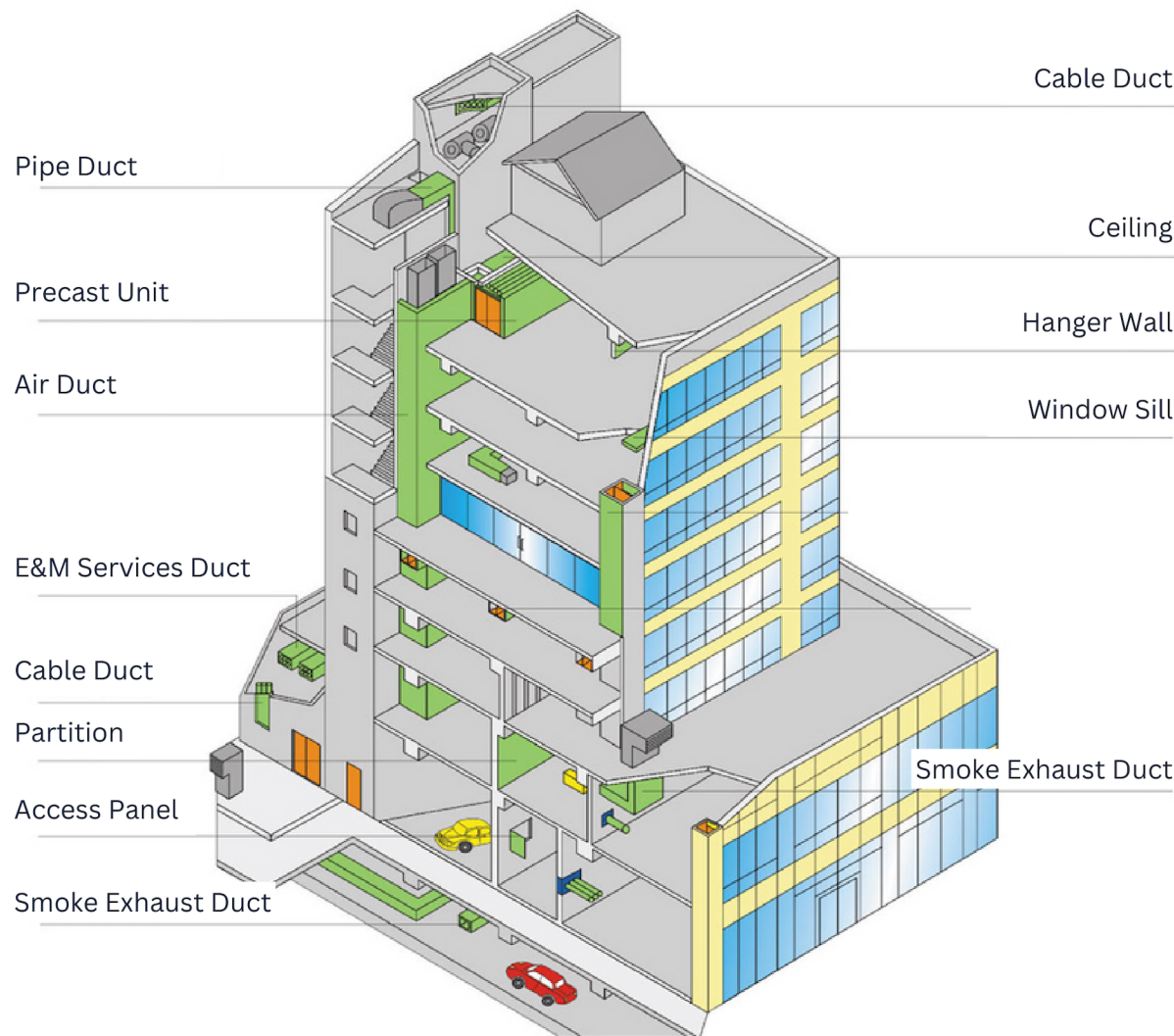
Our Fire Protection Board acts as a reliable cavity barrier and smoke barrier, essential for building safety systems.



Access Panels & Hatches

All access points can be fortified against fire hazards using Bowen Pro Fire Protection Board.

APPLICATIONS



TECHNICAL PERFORMANCE & SPECIFICATIONS

TEST	STANDARD
Water Absorption & Swelling	BS 5669: Part 1 : 1989, Cl. 19
Surface Condition by Direct Visual Inspection	Visual Inspection by Laboratory
Dimensional Changes with Relative Humidity	BS EN 318 : 2002
Resistance to Impact	BS 5669 : Part 1 : 1989, Cl. 21
Flexural Strength and Modulus of Elasticity	BS 2782 - 10 Method 1005 : 1977
Tensile Strength and Modulus of Elasticity	BS 2782 - 10 Method 1003 : 1977
Water Absorption and Dry Density	BS EN 1170-6 : 1998

FIRE PROTECTION PANEL SERIES

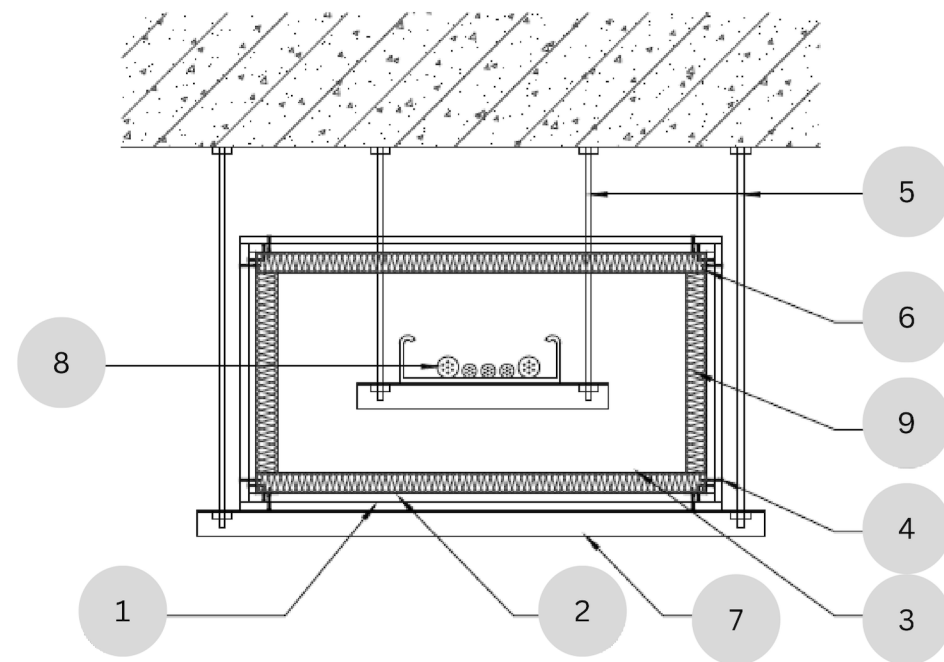
ENCLOSURE SYSTEM

BOWEN PRO FIRE PROTECTION BOARD - CRYSTAL S

4 Hours Fire Rating

Integrity and Insulation in accordance with BS 476-22: 1987, clause 9.

FIG. 1
Four-sided Bowen Pro Fire Protection Board horizontal enclosure system



LEGEND

- | | |
|---------------------------------------------------------------------------------------------------|---------------------------------------------------------------|
| 1) Bowen Pro Fire Protection Board - Crystal S, 9mm thick | 5) Threaded rod hanger stress not exceed 10MPa |
| 2) Bowen Pro Fire Protection Board Fillet - Crystal S, 100mm width, 9mm thick (Inside or outside) | 6) Steel angle minimum 40x40x0.6mm thick |
| 3) Steel channel collar minimum 50x40x0.5mm thick at nominal 600mm centers | 7) Steel angle minimum 50x50x0.6mm thick |
| 4) M4 self-tapping screw of nominal 200mm centers | 8) General E&M Services e.g. Cable Trunking & Steel Pipe etc. |
| | 9) Rock wool 2 layers of 50mmx100kg/m3 |

FIRE PROTECTION PANEL SERIES

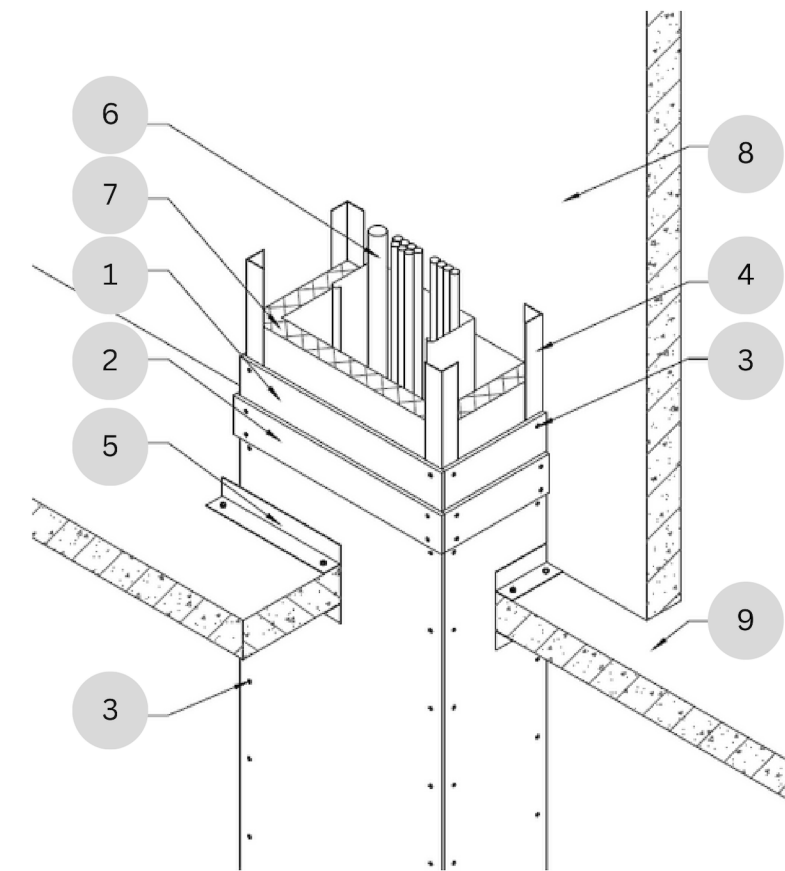
ENCLOSURE SYSTEM

BOWEN PRO FIRE PROTECTION BOARD - CRYSTAL S

4 Hours Fire Rating

Integrity and Insulation in accordance with BS 476-22: 1987, clause 9.

FIG. 2
Three-sided Bowen Pro Fire Protection Board vertical enclosure system



LEGEND

- | | |
|---------------------------------------------------------------------------------------------------|---------------------------------------------------------------|
| 1) Bowen Pro Fire Protection Board - Crystal S, 9mm thick | 5) Steel angle minimum 50x50x0.6mm thick |
| 2) Bowen Pro Fire Protection Board Fillet - Crystal S, 100mm width, 9mm thick (Inside or outside) | 6) General E&M Services e.g. Cable Trunking & Steel Pipe etc. |
| 3) M4 self-tapping screw of nominal 200mm centers | 7) Rock wool 2 layers of 50mmx100kg/m3 |
| 4) Steel angle minimum 40x40x0.6mm thick | 8) Constuction wall |
| | 9) Concrete floor |

ENCLOSURE SYSTEM

BOWEN PRO FIRE PROTECTION BOARD - CRYSTAL S

4 Hours Fire Rating

Integrity and Insulation in accordance with BS 476-22: 1987, clause 9.

FIG. 3
Three-sided construction from floor soffit

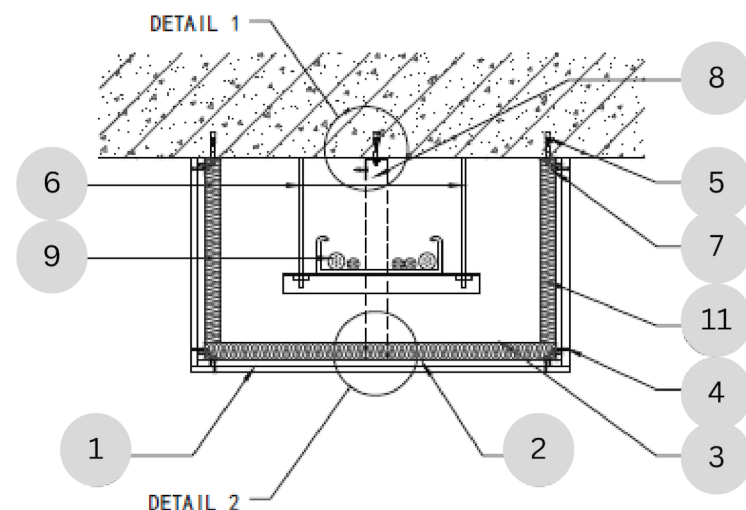
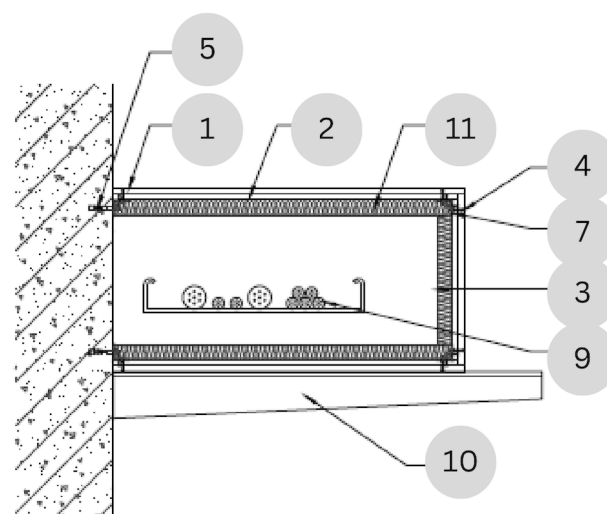


FIG. 3
Three-sided construction from side wall



LEGEND

- | | |
|---------------------------------------------------------------------------------------------------|-----------------------------------------------------------------------------------------------------------------------|
| 1) Bowen Pro Fire Protection Board - Crystal S, 9mm thick | 7) Steel angle minimum 40x40x0.6mm thick |
| 2) Bowen Pro Fire Protection Board Fillet - Crystal S, 100mm width, 9mm thick (Inside or outside) | 8) Additional steel angle (50x50x0.6mm) of max spacing 1200mm for the width of enclosure exceed 1000mm (up to 1500mm) |
| 3) Steel channel collar minimum 50x40x0.5mm thick at nominal 600mm centers | 9) General E&M Services e.g. Cable Trunking & Steel Pipe etc. |
| 4) M4 self-tapping screw of nominal 200mm centers | 10) Cantilever arm at maximum 1250mm center |
| 5) M6 anchor bolt at nominal 500mm centers | 11) Rock wool 2 layers of 50mmx100kg/m3 |
| 6) Threaded rod hanger stress not exceed 10MPa | |

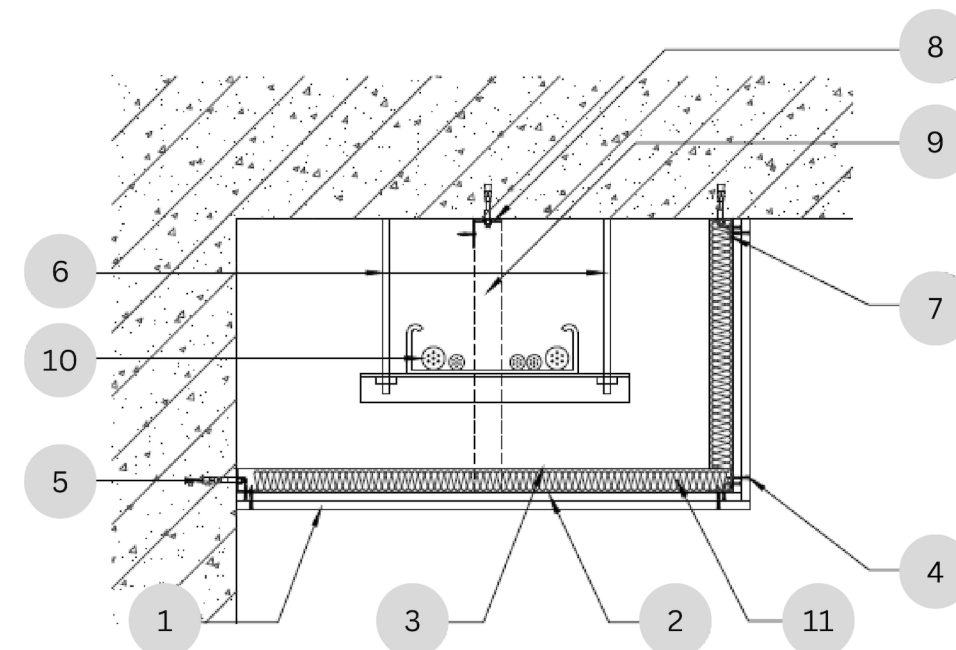
ENCLOSURE SYSTEM

BOWEN PRO FIRE PROTECTION BOARD - CRYSTAL S

4 Hours Fire Rating

Integrity and Insulation in accordance with BS 476-22: 1987, clause 9.

FIG. 4
Two-sided Bowen Pro Fire Protection Board enclosure system



LEGEND

- | | |
|---------------------------------------------------------------------------------------------------|-----------------------------------------------------------------------------------------------------------------------|
| 1) Bowen Pro Fire Protection Board - Crystal S, 9mm thick | 7) Steel angle minimum 40x40x0.6mm thick |
| 2) Bowen Pro Fire Protection Board Fillet - Crystal S, 100mm width, 9mm thick (Inside or outside) | 8) Steel angle minimum 50x50x0.6mm thick |
| 3) Steel channel collar minimum 50x40x0.5mm thick at nominal 600mm centers | 9) Additional steel angle (50x50x0.6mm) of max spacing 1200mm for the width of enclosure exceed 1000mm (up to 1500mm) |
| 4) M4 self-tapping screw of nominal 200mm centers | 10) General E&M Services e.g. Cable Trunking & Steel Pipe etc. |
| 5) M6 anchor bolt at nominal 500mm centers | 11) Rock wool 2 layers of 50mmx100kg/m3 |
| 6) Threaded rod hanger stress not exceed 10MPa | |

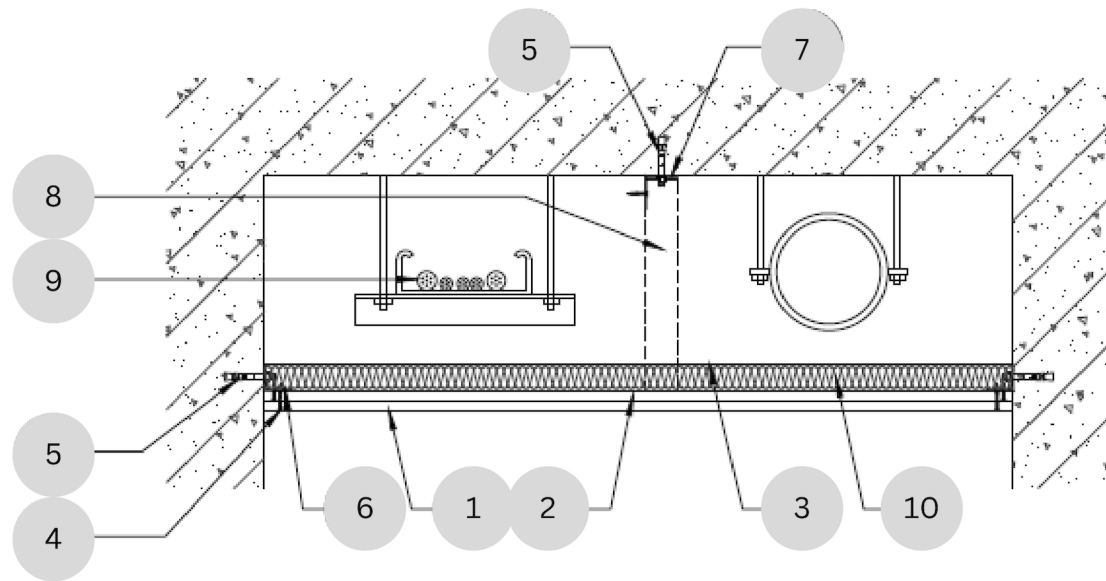
ENCLOSURE SYSTEM

BOWEN PRO FIRE PROTECTION BOARD - CRYSTAL S

4 Hours Fire Rating

Integrity and Insulation in accordance with BS 476-22: 1987, clause 9.

FIG. 5
One-sided Bowen Pro Fire Protection Board enclosure system



LEGEND

- | | |
|------------------------------------------------------------------------------------------------------|-----------------------------------------------------------------------------------------------------------------------------|
| 1) Bowen Pro Fire Protection Board - Crystal S, 9mm thick | 6) Steel angle minimum 40x40x0.6mm thick |
| 2) Bowen Pro Fire Protection Board Fillet - Crystal S,
100mm width, 9mm thick (Inside or outside) | 7) Steel angle minimum 50x50x0.6mm thick |
| 3) Steel channel collar minimum 50x40x0.5mm thick at
nominal 600mm centers | 8) Additional steel angle (50x50x0.6mm) of max spacing
1200mm for the width of enclosure exceed 1000mm
(up to 1500mm) |
| 4) M4 self-tapping screw of nominal 200mm centers | 9) General E&M Services e.g. Cable Trunking & Steel Pipe etc. |
| 5) M6 anchor bolt at nominal 500mm centers | 10) Rock wool 2 layers of 50mmx100kg/m3 |

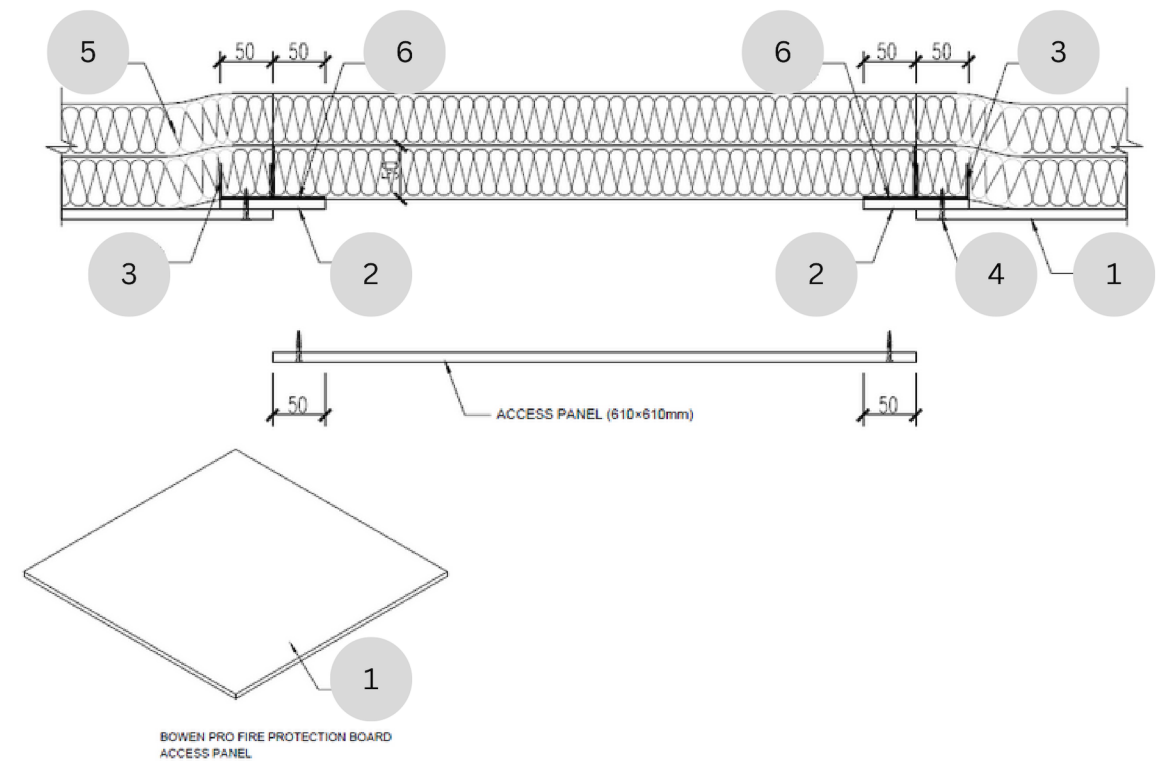
ENCLOSURE SYSTEM

BOWEN PRO FIRE PROTECTION BOARD - CRYSTAL S

4 Hours Fire Rating

Integrity and Insulation in accordance with BS 476-22: 1987, clause 9.

FIG. 6
Bowen Pro Fire Protection Board access board



LEGEND

- 1) Bowen Pro Fire Protection Board - Crystal S, 9mm thick
- 2) Bowen Pro Fire Protection Board Fillet - Crystal S, 100mm width, 9mm thick
- 3) Steel C-channel 40x50x40x0.5mm thick at 600mm spacing
- 4) M4 self-tapping screw of nominal 200mm centers
- 5) Rock wool 2 layers of 50mmx100kg/m3
- 6) Ceiling opening, steel angel 50x50x0.5mm thick

FIRE PROTECTION PANEL SERIES

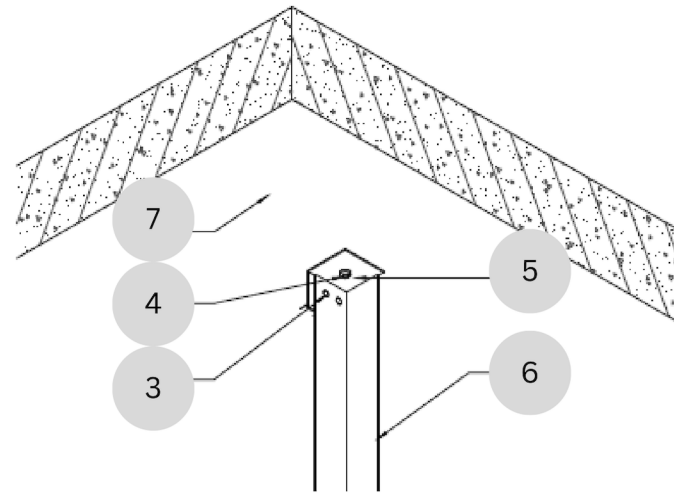
ENCLOSURE SYSTEM

BOWEN PRO FIRE PROTECTION BOARD - CRYSTAL S

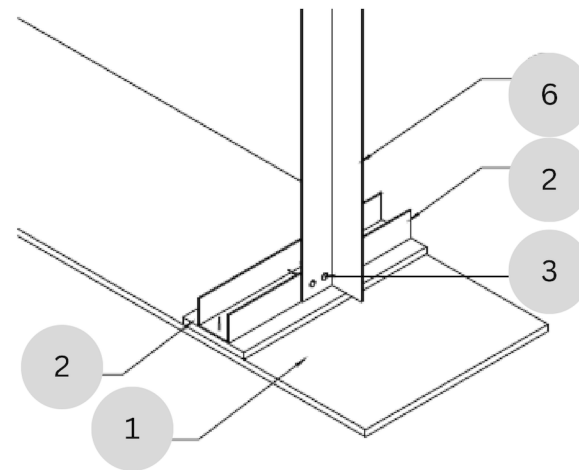
4 Hours Fire Rating

Integrity and Insulation in accordance with BS 476-22: 1987, clause 9.

Detail 1



Detail 2



LEGEND

- | | |
|---------------------------------------------------------------------------------------------------|-----------------------------------------------------------------------------------------------------------------------|
| 1) Bowen Pro Fire Protection Board - Crystal S, 9mm thick | 5) Steel angle minimum 50x50x0.6mm thick |
| 2) Bowen Pro Fire Protection Board Fillet - Crystal S, 100mm width, 9mm thick (Inside or outside) | 6) Additional steel angle (50x50x0.6mm) of max spacing 1200mm for the width of enclosure exceed 1000mm (up to 1500mm) |
| 3) M4 self-tapping screw of nominal 200mm centers | 7) Concrete floor |
| 4) M6 anchor bolt at nominal 500mm centers | |

FIRE PROTECTION PANEL SERIES

ENCLOSURE SYSTEM

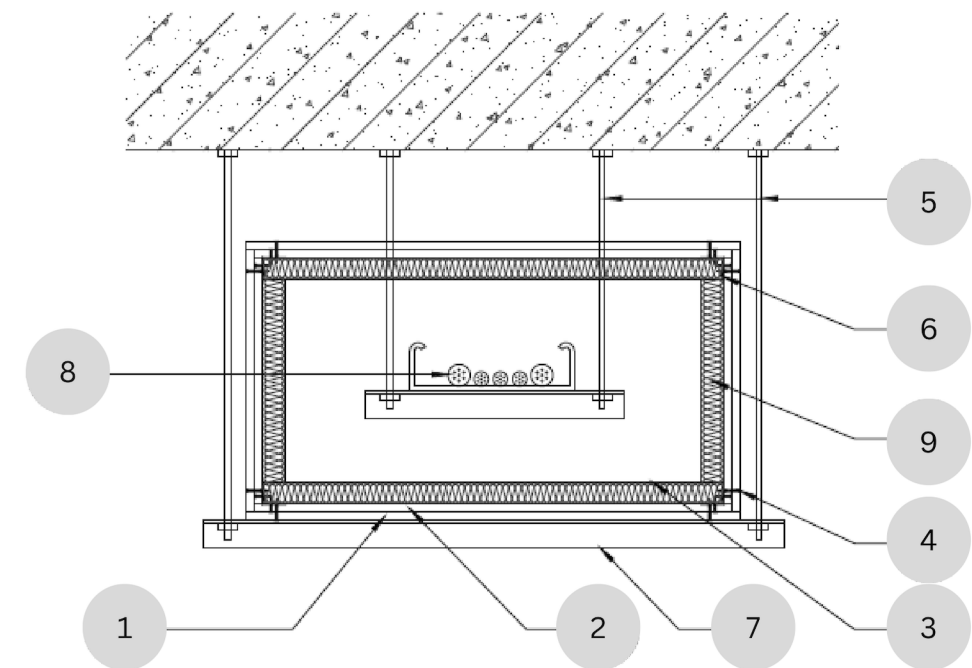
BOWEN PRO FIRE PROTECTION BOARD

2 Hours Fire Rating

Integrity and Insulation in accordance with BS 476-22: 1987, clause 9.

FIG. 1

Four-sided Bowen Pro Fire Protection Board horizontal enclosure system



LEGEND

- | | |
|---------------------------------------------------------------------------------------|---------------------------------------------------------------|
| 1) Bowen Pro Fire Protection Board, 9mm thick | 5) Threaded rod hanger stress not exceed 10MPa |
| 2) Bowen Pro Fire Protection Board Fillet, 100mm width, 9mm thick (Inside or outside) | 6) Steel angle minimum 40x40x0.6mm thick |
| 3) Steel channel collar minimum 50x40x0.5mm thick at nominal 600mm centers | 7) Steel angle minimum 50x50x0.6mm thick |
| 4) M4 self-tapping screw of nominal 200mm centers | 8) General E&M Services e.g. Cable Trunking & Steel Pipe etc. |
| | 9) Rock wool 2 layers of 50mmx100kg/m3 |

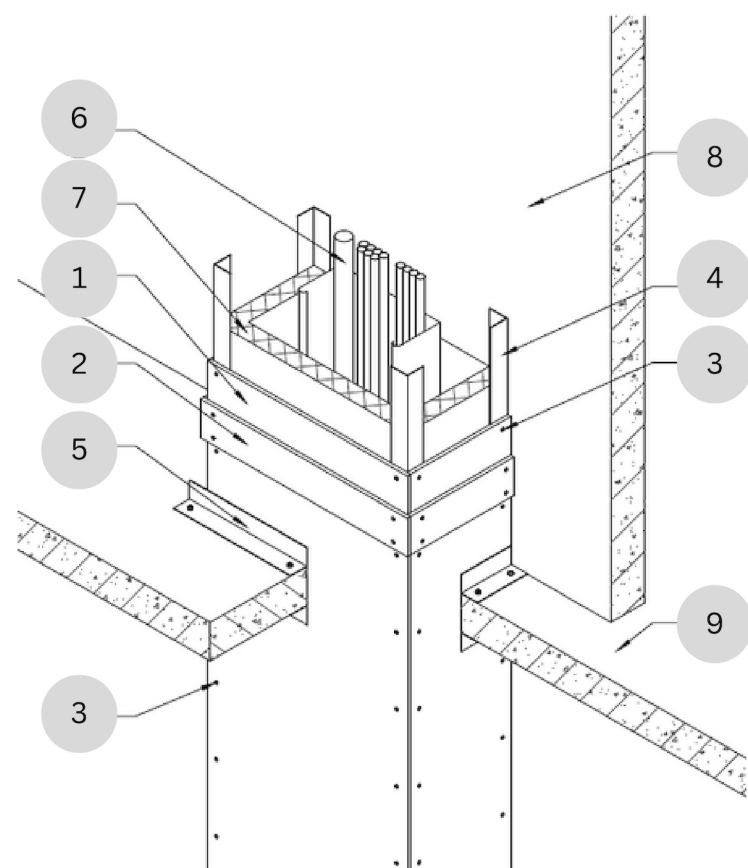
ENCLOSURE SYSTEM

BOWEN PRO FIRE PROTECTION BOARD

2 Hours Fire Rating

Integrity and Insulation in accordance with BS 476-22: 1987, clause 9.

FIG. 2
Three-sided Bowen Pro Fire Protection Board vertical enclosure system



LEGEND

- | | |
|---------------------------------------------------------------------------------------|---------------------------------------------------------------|
| 1) Bowen Pro Fire Protection Board, 9mm thick | 5) Steel angle minimum 50x50x0.6mm thick |
| 2) Bowen Pro Fire Protection Board Fillet, 100mm width, 9mm thick (Inside or outside) | 6) General E&M Services e.g. Cable Trunking & Steel Pipe etc. |
| 3) M4 self-tapping screw of nominal 200mm centers | 7) Rock wool 2 layers of 50mmx100kg/m ³ |
| 4) Steel angle minimum 40x40x0.6mm thick | 8) Constuction wall |
| | 9) Concrete floor |

ENCLOSURE SYSTEM

BOWEN PRO FIRE PROTECTION BOARD

2 Hours Fire Rating

Integrity and Insulation in accordance with BS 476-22: 1987, clause 9.

FIG. 3
Three-sided construction from floor soffit

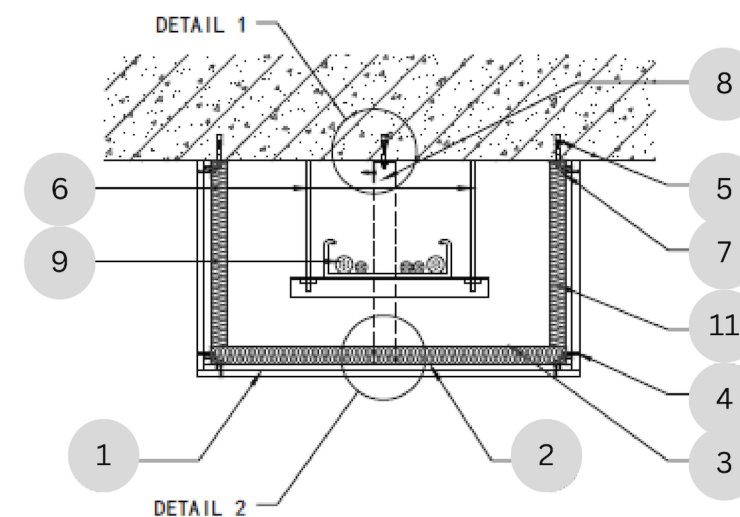
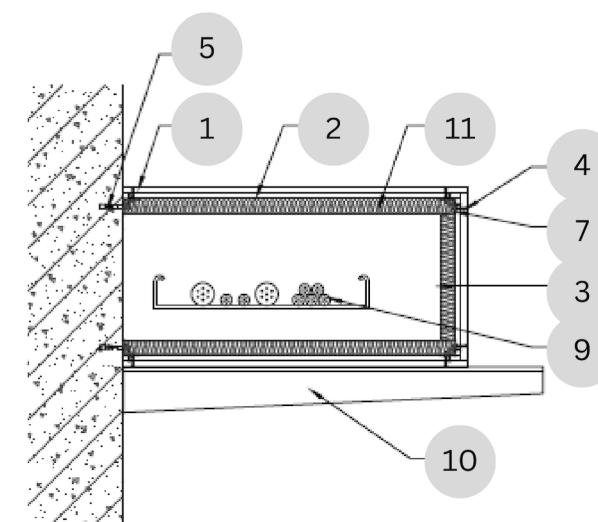


FIG. 3
Three-sided construction from side wall



LEGEND

- | | |
|---------------------------------------------------------------------------------------|-----------------------------------------------------------------------------------------------------------------------|
| 1) Bowen Pro Fire Protection Board, 9mm thick | 7) Steel angle minimum 40x40x0.6mm thick |
| 2) Bowen Pro Fire Protection Board Fillet, 100mm width, 9mm thick (Inside or outside) | 8) Additional steel angle (50x50x0.6mm) of max spacing 1200mm for the width of enclosure exceed 1000mm (up to 1500mm) |
| 3) Steel channel collar minimum 50x40x0.5mm thick at nominal 600mm centers | 9) General E&M Services e.g. Cable Trunking & Steel Pipe etc. |
| 4) M4 self-tapping screw of nominal 200mm centers | 10) Cantilever arm at maximum 1250mm center |
| 5) M6 anchor bolt at nominal 500mm centers | 11) Rock wool 2 layers of 50mmx100kg/m ³ |
| 6) Threaded rod hanger stress not exceed 10MPa | |

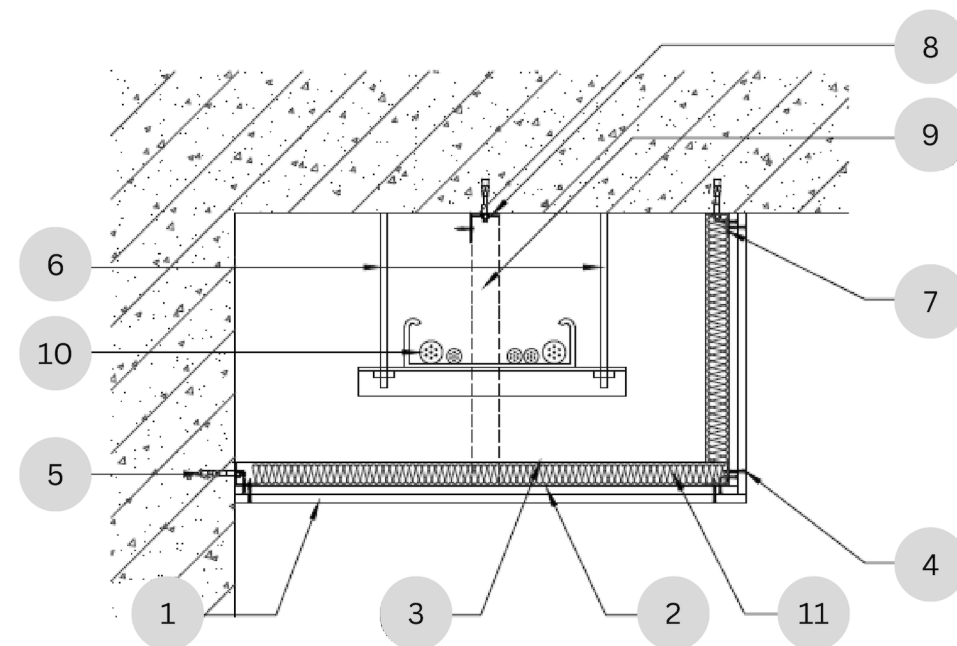
ENCLOSURE SYSTEM

BOWEN PRO FIRE PROTECTION BOARD

2 Hours Fire Rating

Integrity and Insulation in accordance with BS 476-22: 1987, clause 9.

FIG. 4
Two-sided Bowen Pro Fire Protection Board enclosure system



LEGEND

- | | |
|---------------------------------------------------------------------------------------|-----------------------------------------------------------------------------------------------------------------------|
| 1) Bowen Pro Fire Protection Board, 9mm thick | 7) Steel angle minimum 40x40x0.6mm thick |
| 2) Bowen Pro Fire Protection Board Fillet, 100mm width, 9mm thick (Inside or outside) | 8) Steel angle minimum 50x50x0.6mm thick |
| 3) Steel channel collar minimum 50x40x0.5mm thick at nominal 600mm centers | 9) Additional steel angle (50x50x0.6mm) of max spacing 1200mm for the width of enclosure exceed 1000mm (up to 1500mm) |
| 4) M4 self-tapping screw of nominal 200mm centers | 10) General E&M Services e.g. Cable Trunking & Steel Pipe etc. |
| 5) M6 anchor bolt at nominal 500mm centers | 11) Rock wool 2 layers of 50mmx100kg/m3 |
| 6) Threaded rod hanger stress not exceed 10MPa | |

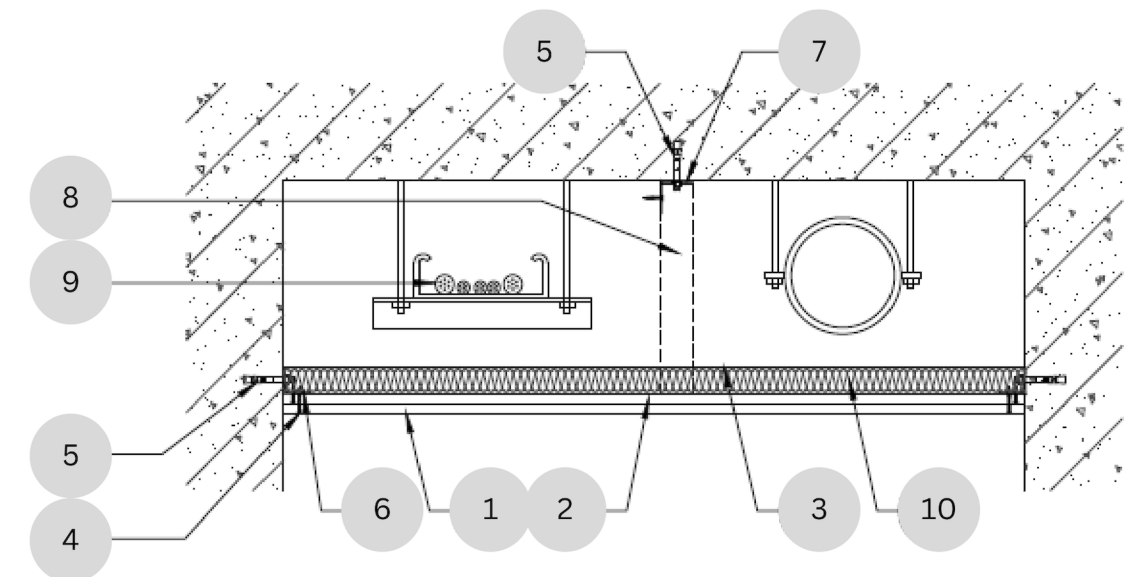
ENCLOSURE SYSTEM

BOWEN PRO FIRE PROTECTION BOARD

2 Hours Fire Rating

Integrity and Insulation in accordance with BS 476-22: 1987, clause 9.

FIG. 5
One-sided Bowen Pro Fire Protection Board enclosure system



LEGEND

- | | |
|---------------------------------------------------------------------------------------|-----------------------------------------------------------------------------------------------------------------------|
| 1) Bowen Pro Fire Protection Board, 9mm thick | 6) Steel angle minimum 40x40x0.6mm thick |
| 2) Bowen Pro Fire Protection Board Fillet, 100mm width, 9mm thick (Inside or outside) | 7) Steel angle minimum 50x50x0.6mm thick |
| 3) Steel channel collar minimum 50x40x0.5mm thick at nominal 600mm centers | 8) Additional steel angle (50x50x0.6mm) of max spacing 1200mm for the width of enclosure exceed 1000mm (up to 1500mm) |
| 4) M4 self-tapping screw of nominal 200mm centers | 9) General E&M Services e.g. Cable Trunking & Steel Pipe etc. |
| 5) M6 anchor bolt at nominal 500mm centers | 10) Rock wool 2 layers of 50mmx100kg/m3 |

FIRE PROTECTION PANEL SERIES

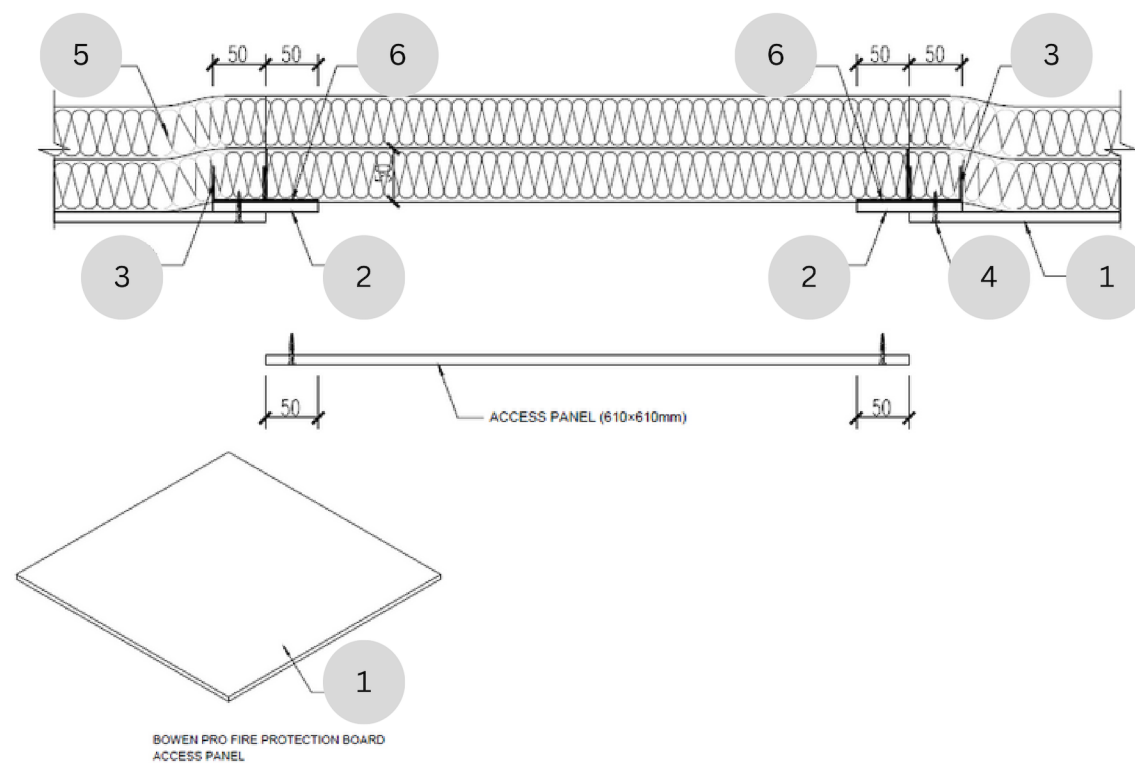
ENCLOSURE SYSTEM

BOWEN PRO FIRE PROTECTION BOARD

2 Hours Fire Rating

Integrity and Insulation in accordance with BS 476-22: 1987, clause 9.

FIG. 6
Bowen Pro Fire Protection Board access board



LEGEND

- 1) Bowen Pro Fire Protection Board, 9mm thick
- 2) Bowen Pro Fire Protection Board Fillet, 100mm width, 9mm thick
- 3) Steel C-channel 40x50x40x0.5mm thick at 600mm spacing
- 4) M4 self-tapping screw of nominal 200mm centers
- 5) Rock wool 2 layers of 50mmx100kg/m3
- 6) Ceiling opening, steel angel 50x50x0.5mm thick

FIRE PROTECTION PANEL SERIES

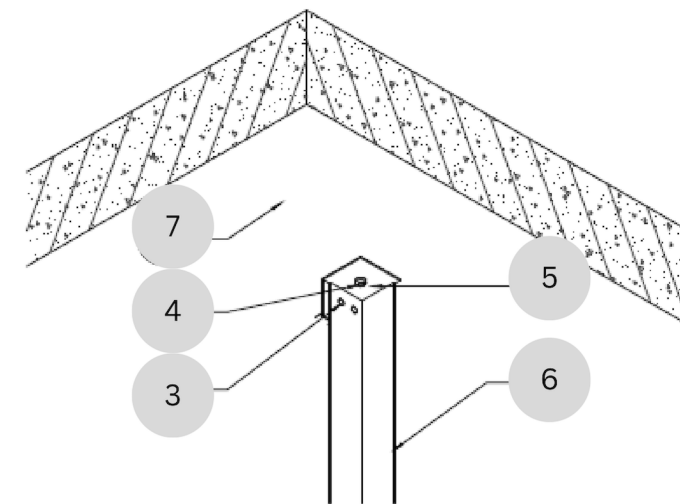
ENCLOSURE SYSTEM

BOWEN PRO FIRE PROTECTION BOARD

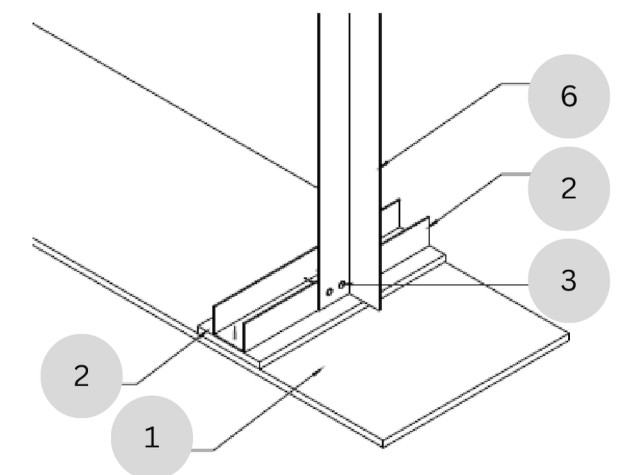
2 Hours Fire Rating

Integrity and Insulation in accordance with BS 476-22: 1987, clause 9.

Detail 1



Detail 2



LEGEND

- 1) Bowen Pro Fire Protection Board, 9mm thick
- 2) Bowen Pro Fire Protection Board Fillet, 100mm width, 9mm thick
- 3) M4 self-tapping screw of nominal 200mm centers
- 4) M6 anchor bolt at nominal 500mm centers
- 5) Steel angle minimum 50x50x0.6mm thick
- 6) Additional steel angle (50x50x0.6mm) of max spacing 1200mm for the width of enclosure exceed 1000mm (up to 1500mm)
- 7) Concrete floor

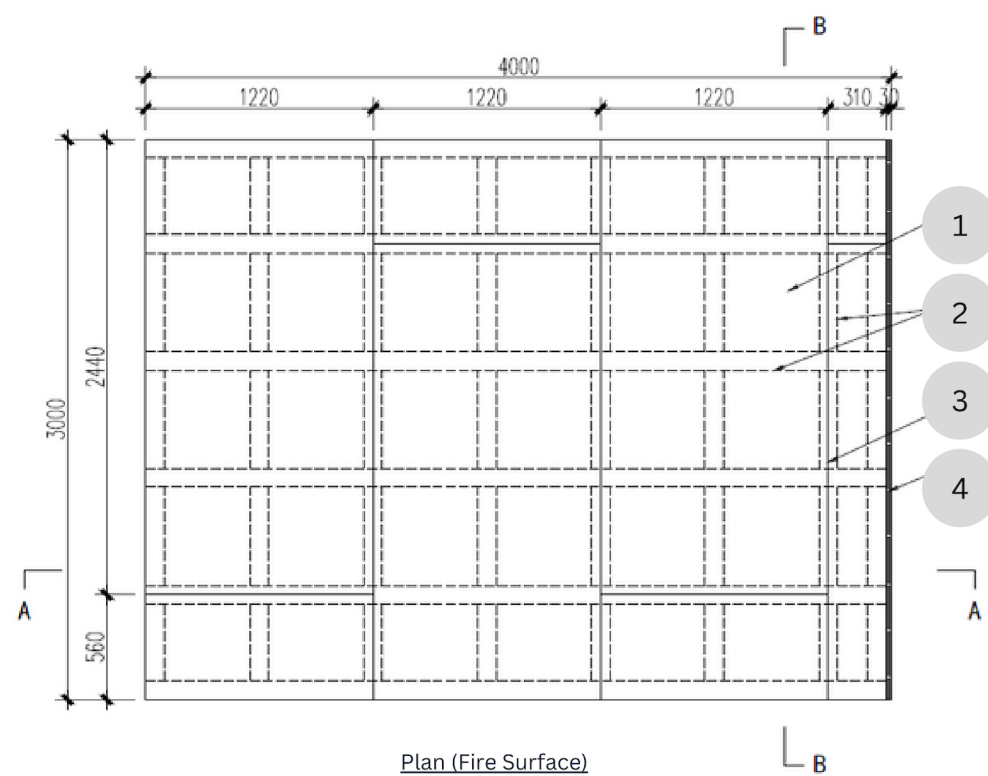
CEILING

BOWEN PRO FIRE PROTECTION BOARD - CRYSTAL S

4 Hours Fire Rating

Integrity and Insulation in accordance with BS 476-22: 1987, clause 9.

FIG. 1
Specimen construction drawing



LEGEND

- 1) Bowen Pro Fire Protection Board - Crystal S, 9mm
- 2) Bowen Pro 9mm Fire Protection Board - Crystal S Lath Width 100mm
- 3) Joints between the plates filled with gypsum putty
- 4) Filled with fireproof cotton in free edge

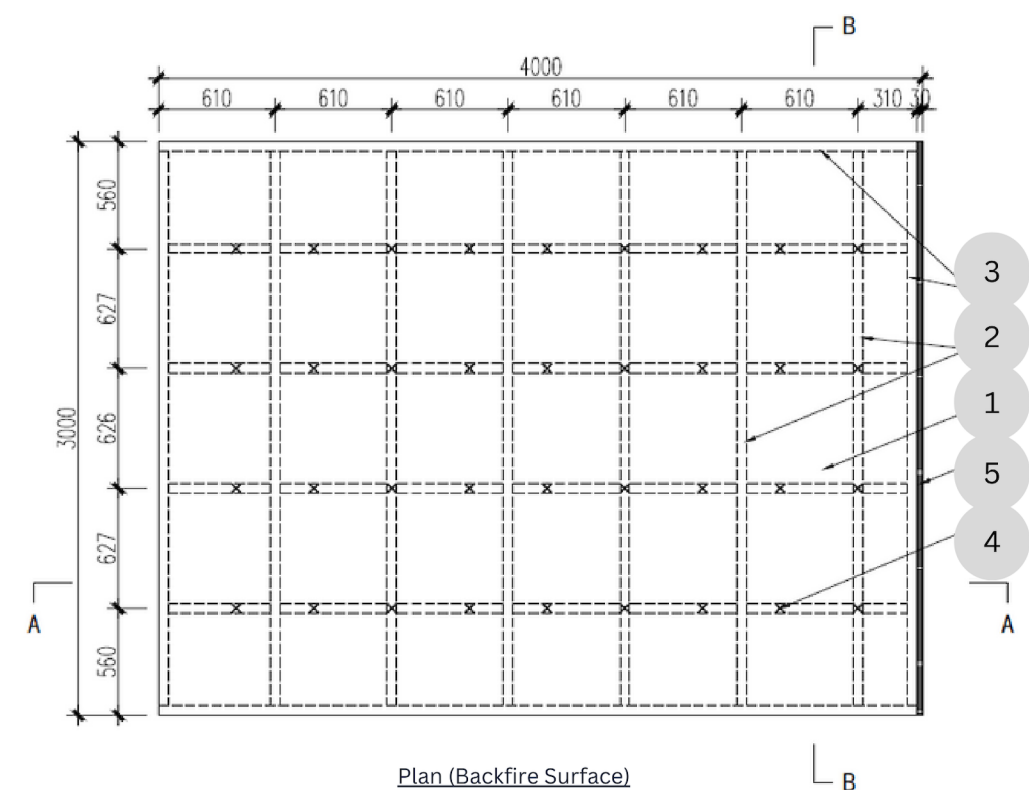
CEILING

BOWEN PRO FIRE PROTECTION BOARD - CRYSTAL S

4 Hours Fire Rating

Integrity and Insulation in accordance with BS 476-22: 1987, clause 9.

FIG. 2
Specimen construction drawing



LEGEND

- 1) Volume of 100kg/m3 rock wool, 2 layers 50mm thick
- 2) QU50x40x0.6mm Light steel keel, U groove in transverse direction & C groove in longitudinal direction
- 3) Side keel QU50x40x0.6mm Light steel keel, U groove
- 4) Hanging rod Φ8 threaded rod
- 5) Filled with fireproof cotton in free edge

FIRE PROTECTION PANEL SERIES

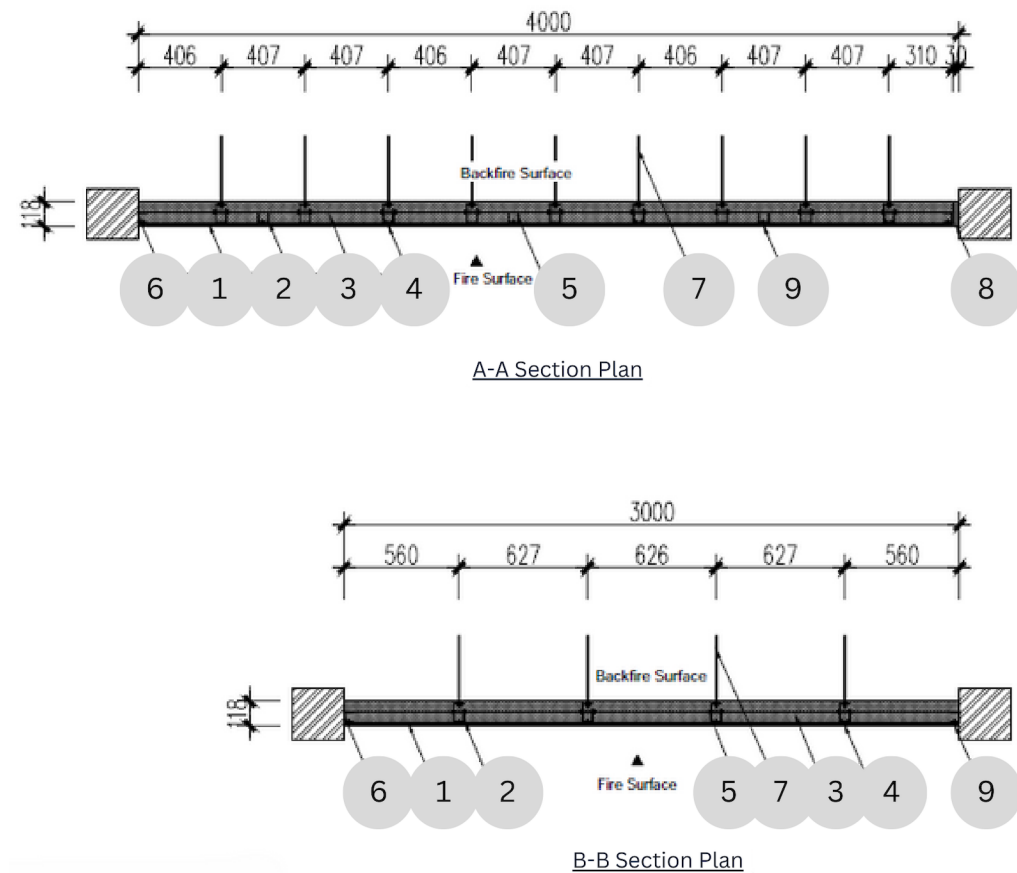
CEILING

BOWEN PRO FIRE PROTECTION BOARD - CRYSTAL S

4 Hours Fire Rating

Integrity and Insulation in accordance with BS 476-22: 1987, clause 9.

FIG. 3
Specimen construction drawing



LEGEND

- | | |
|---------------------------------------------------------------------|----------------------------------------------------------------------------------------------------------|
| 1) Bowen Pro Fire Protection Board - Crystal S, 9mm | 5) QU50×40×0.6mm Light steel keel, U groove in transverse direction & C groove in longitudinal direction |
| 2) Bowen Pro 9mm Fire Protection Board - Crystal S Lath Width 100mm | 6) Side keel QU50x40x0.6mm Light steel keel, U groove |
| 3) Volume of 100kg/m ³ rock wool, 2 layers 50mm thick | 7) Hanging rod Φ8 threaded rod |
| 4) Joints between the plates filled with gypsum putty | 8) Filled with fireproof cotton in free edge |
| | 9) M3.5*40mm self-tapping screw spacing of 180-200mm |

FIRE PROTECTION PANEL SERIES

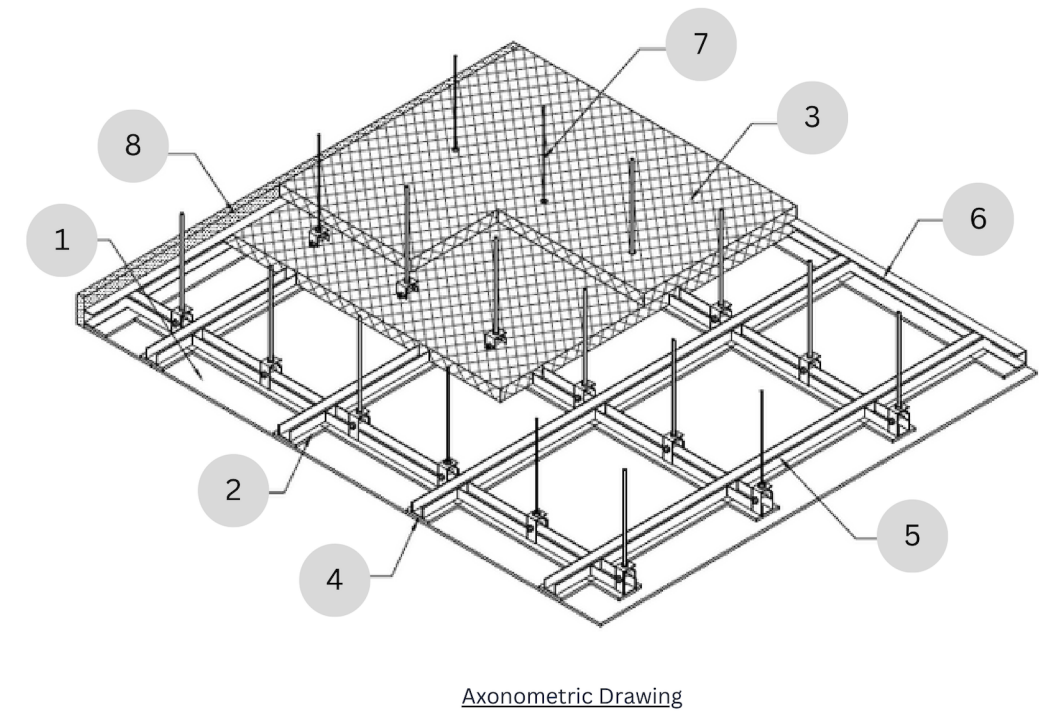
CEILING

BOWEN PRO FIRE PROTECTION BOARD - CRYSTAL S

4 Hours Fire Rating

Integrity and Insulation in accordance with BS 476-22: 1987, clause 9.

FIG. 4
Specimen construction drawing



LEGEND

- | | |
|---------------------------------------------------------------------|----------------------------------------------------------------------------------------------------------|
| 1) Bowen Pro Fire Protection Board - Crystal S, 9mm | 5) QU50×40×0.6mm Light steel keel, U groove in transverse direction & C groove in longitudinal direction |
| 2) Bowen Pro 9mm Fire Protection Board - Crystal S Lath Width 100mm | 6) Side keel QU50x40x0.6mm Light steel keel, U groove |
| 3) Volume of 100kg/m ³ rock wool, 2 layers 50mm thick | 7) Hanging rod Φ8 threaded rod |
| 4) Joints between the plates filled with gypsum putty | 8) Filled with fireproof cotton in free edge |

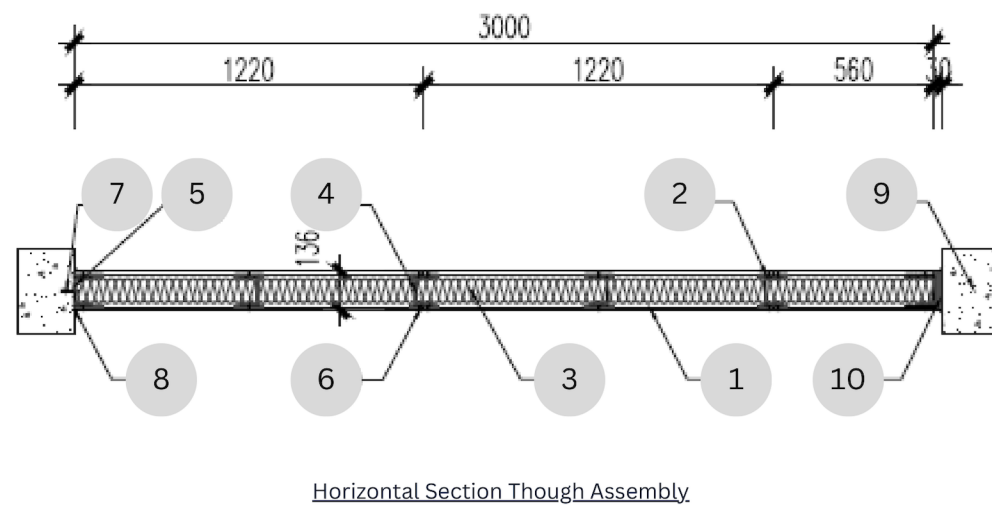
PARTITION

BOWEN PRO FIRE PROTECTION BOARD - CRYSTAL S

4 Hours Fire Rating

Integrity and Insulation in accordance with BS 476-22: 1987, clause 9.

FIG. 1
Specimen construction drawing



LEGEND

- | | |
|---------------------------------------------------------------------|-------------------------------------------------------|
| 1) Bowen Pro Fire Protection Board - Crystal S, 9mm | 6) M3.5*40mm self-tapping screws spacing of 180-200mm |
| 2) Bowen Pro 9mm Fire Protection Board - Crystal S Lath Width 100mm | 7) $\Phi 6$ expansion bolts |
| 3) Rock wool 100kg/m ³ density, 100mm thick | 8) Fireproof glue at all joints |
| 4) Steel keel 100x50x0.8mm | 9) Concrete testing framework |
| 5) Floor & ceiling steel keel 100x50x0.8mm | 10) Expansion gap filled with fireproof cotton |

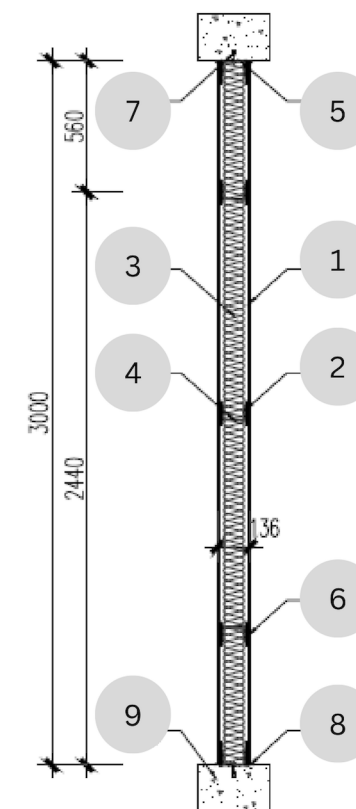
PARTITION

BOWEN PRO FIRE PROTECTION BOARD - CRYSTAL S

4 Hours Fire Rating

Integrity and Insulation in accordance with BS 476-22: 1987, clause 9.

FIG. 2
Specimen construction drawing



LEGEND

- | | |
|---------------------------------------------------------------------|-------------------------------------------------------|
| 1) Bowen Pro Fire Protection Board - Crystal S, 9mm | 5) Floor & ceiling steel keel 100x50x0.8mm |
| 2) Bowen Pro 9mm Fire Protection Board - Crystal S Lath Width 100mm | 6) M3.5*40mm self-tapping screws spacing of 180-200mm |
| 3) Rock wool 100kg/m ³ density, 100mm thick | 7) $\Phi 6$ expansion bolts |
| 4) Steel keel 100x50x0.8mm | 8) Fireproof glue at all joints |
| | 9) Concrete testing framework |

FIRE PROTECTION PANEL SERIES

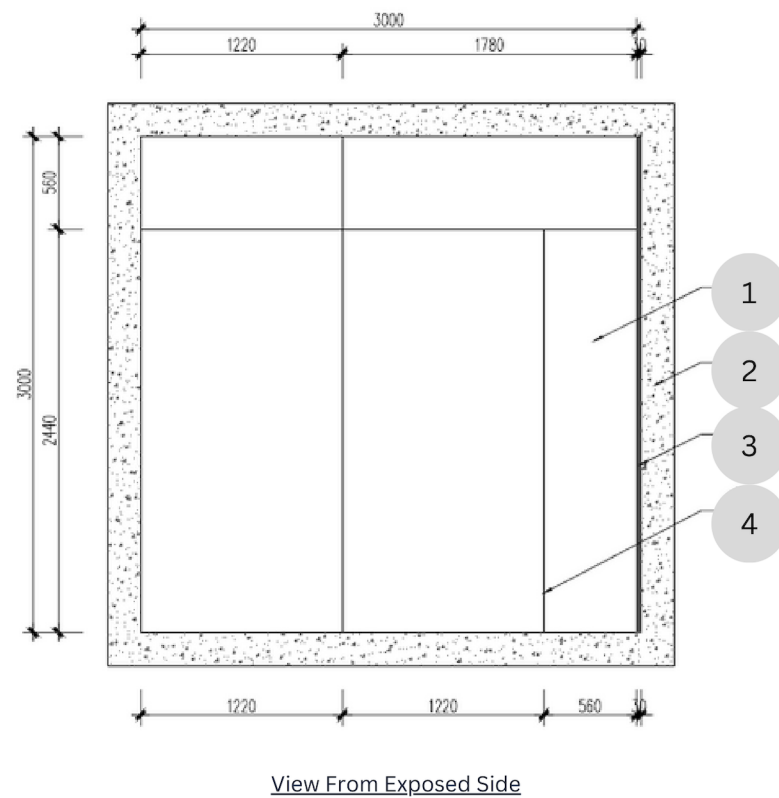
PARTITION

BOWEN PRO FIRE PROTECTION BOARD - CRYSTAL S

4 Hours Fire Rating

Integrity and Insulation in accordance with BS 476-22: 1987, clause 9.

FIG. 3
Specimen construction drawing



LEGEND

- 1) Bowen Pro Fire Protection Board - Crystal S, 9mm
- 2) Concrete testing framework
- 3) Expansion gap filled with fireproof cotton
- 4) Fireproof glue at all joints

FIRE PROTECTION PANEL SERIES

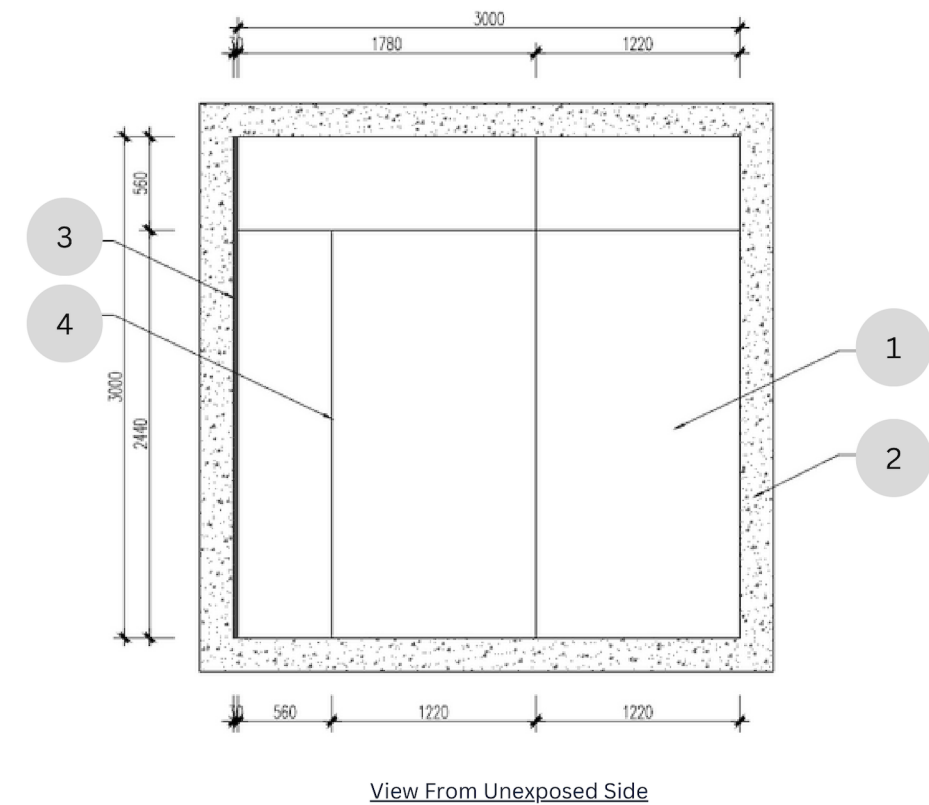
PARTITION

BOWEN PRO FIRE PROTECTION BOARD - CRYSTAL S

4 Hours Fire Rating

Integrity and Insulation in accordance with BS 476-22: 1987, clause 9.

FIG. 4
Specimen construction drawing



LEGEND

- 1) Bowen Pro Fire Protection Board - Crystal S, 9mm
- 2) Concrete testing framework
- 3) Expansion gap filled with fireproof cotton
- 4) Fireproof glue at all joints

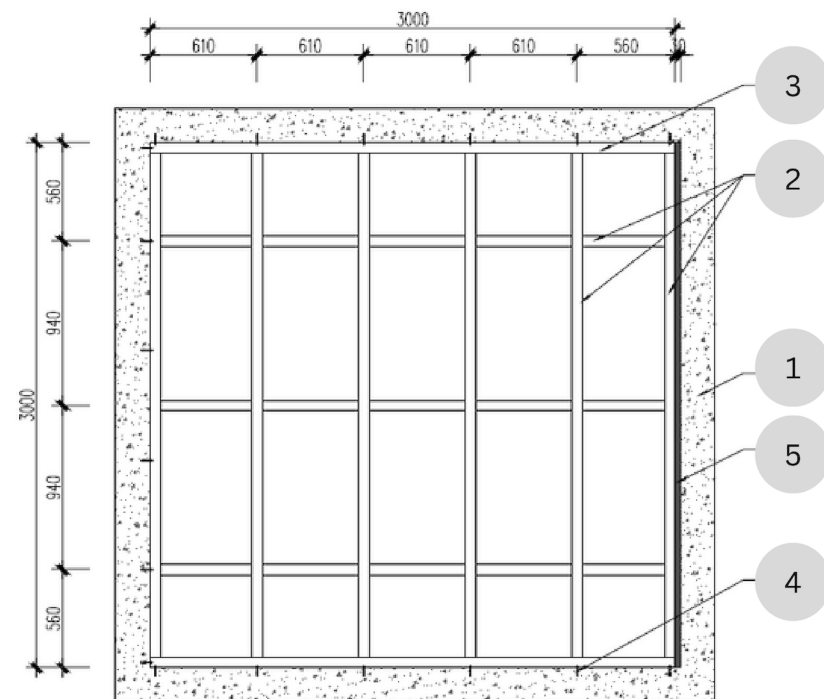
PARTITION

BOWEN PRO FIRE PROTECTION BOARD - CRYSTAL S

4 Hours Fire Rating

Integrity and Insulation in accordance with BS 476-22: 1987, clause 9.

FIG. 5
Specimen construction drawing



Steel Keel Frame

LEGEND

- 1) Concrete testing framework
- 2) Steel keel 100x50x0.8mm
- 3) Floor & ceiling steel keel 100x50x0.8mm
- 4) $\Phi 6$ expansion bolts
- 5) Expansion gap filled with fireproof cotton

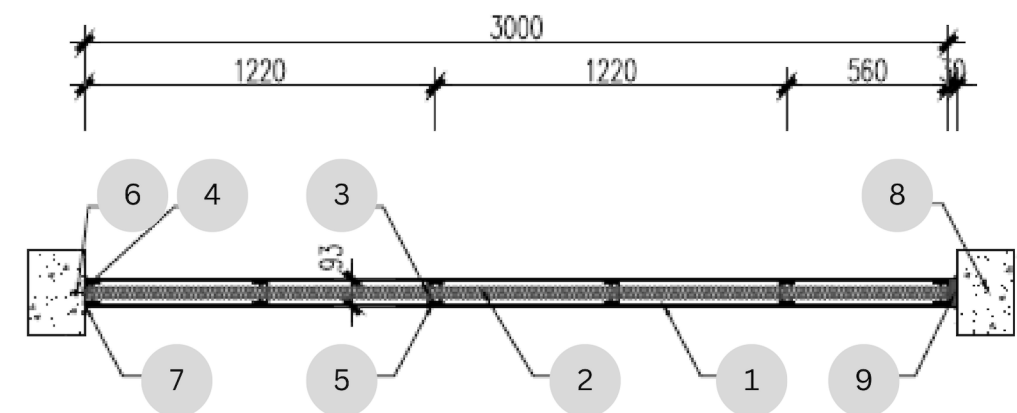
PARTITION

BOWEN PRO FIRE PROTECTION BOARD

2 Hours Fire Rating

Integrity and Insulation in accordance with BS 476-22: 1987, clause 9.

FIG. 1
Specimen construction drawing



Horizontal Section Through Assembly

LEGEND

- | | |
|-------------------------------------------|-------------------------------------------------------|
| 1) Bowen Pro 9mm Fire Protection Board | 5) M3.5*40mm self-tapping screws spacing of 180-200mm |
| 2) Rock wool 80kg/m3 density, 50mm thick | 6) $\Phi 6$ expansion bolts |
| 3) Steel keel 75x50x0.8mm | 7) Fireproof glue at all joints |
| 4) Floor & ceiling steel keel 75x50x0.8mm | 8) Concrete testing framework |
| | 9) Expansion gap filled with fireproof cotton |

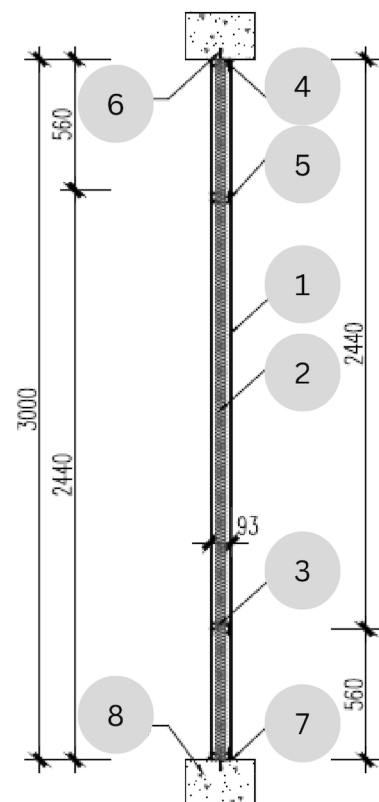
PARTITION

BOWEN PRO FIRE PROTECTION BOARD

2 Hours Fire Rating

Integrity and Insulation in accordance with BS 476-22: 1987, clause 9.

FIG. 2
Specimen construction drawing



Vertical Section Through Assembly

LEGEND

- | | |
|------------------------------------------------------|-------------------------------------------------------|
| 1) Bowen Pro 9mm Fire Protection Board | 5) M3.5*40mm self-tapping screws spacing of 180-200mm |
| 2) Rock wool 80kg/m ³ density, 50mm thick | 6) Φ6 expansion bolts |
| 3) Steel keel 75x50x0.8mm | 7) Fireproof glue at all joints |
| 4) Floor & ceiling steel keel 75x50x0.8mm | 8) Concrete testing framework |

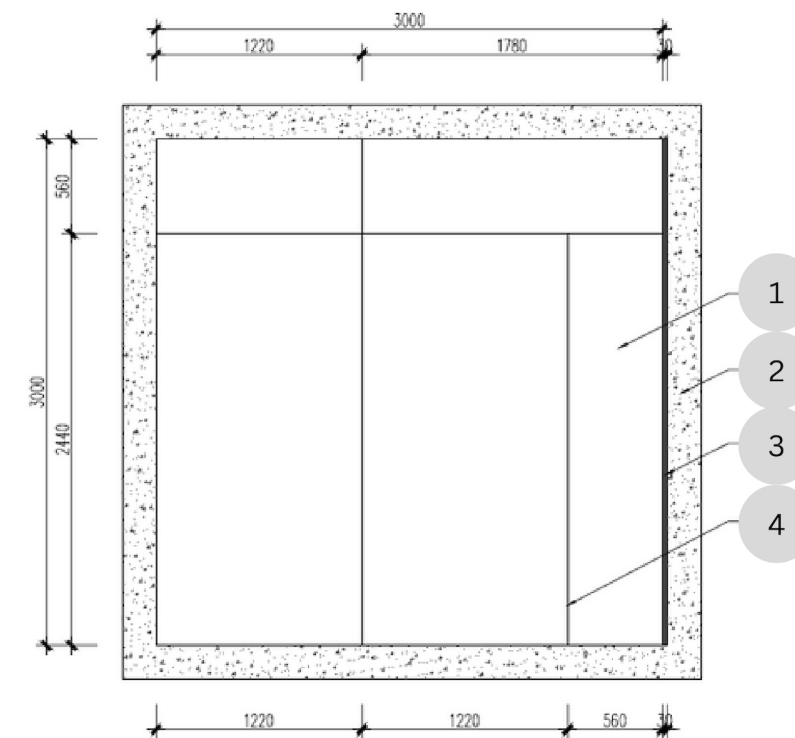
PARTITION

BOWEN PRO FIRE PROTECTION BOARD

2 Hours Fire Rating

Integrity and Insulation in accordance with BS 476-22: 1987, clause 9.

FIG. 3
Specimen construction drawing



View From Exposed Side

LEGEND

- | |
|-----------------------------------------------|
| 1) Bowen Pro 9mm Fire Protection Board |
| 2) Concrete testing framework |
| 3) Expansion gap filled with fireproof cotton |
| 4) Fireproof glue at all joints |

FIRE PROTECTION PANEL SERIES

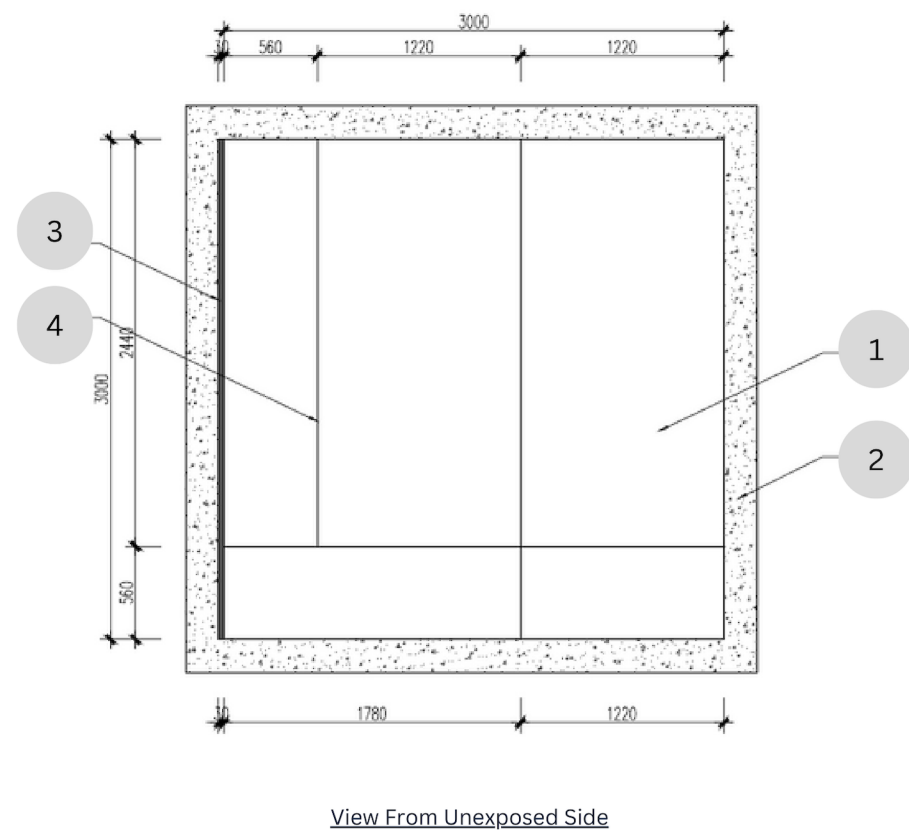
PARTITION

BOWEN PRO FIRE PROTECTION BOARD

2 Hours Fire Rating

Integrity and Insulation in accordance with BS 476-22: 1987, clause 9.

FIG. 4
Specimen construction drawing



LEGEND

- 1) Bowen Pro 9mm Fire Protection Board
- 2) Concrete testing framework
- 3) Expansion gap filled with fireproof cotton
- 4) Fireproof glue at all joints

FIRE PROTECTION PANEL SERIES

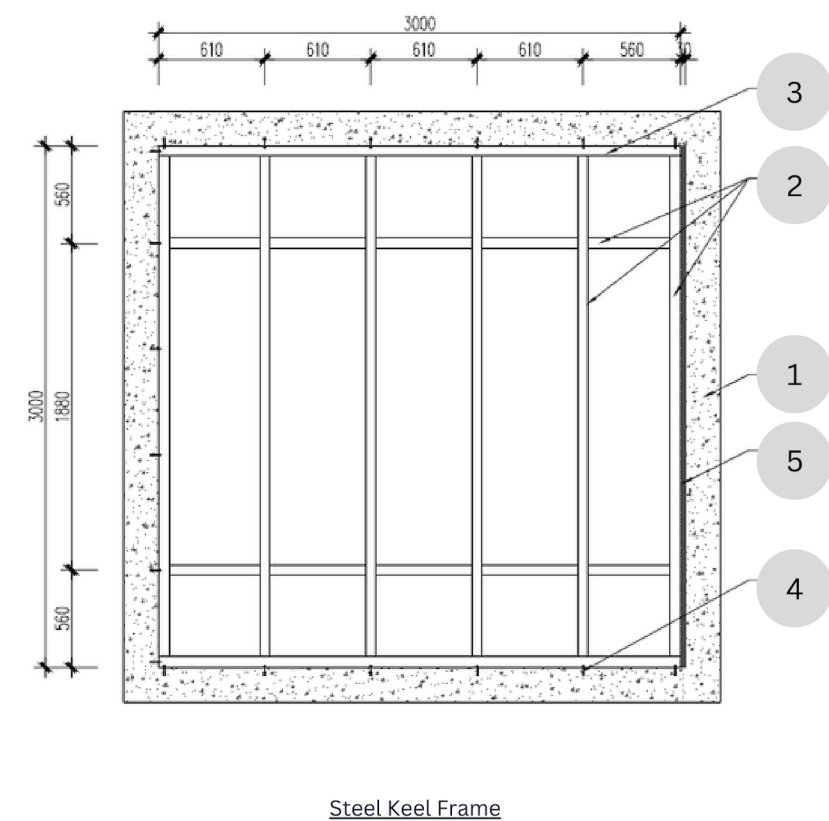
PARTITION

BOWEN PRO FIRE PROTECTION BOARD

2 Hours Fire Rating

Integrity and Insulation in accordance with BS 476-22: 1987, clause 9.

FIG. 5
Specimen construction drawing



LEGEND

- 1) Concrete testing framework
- 2) Steel keel 75x50x0.8mm
- 3) Floor & ceiling steel keel 75x50x0.8mm
- 4) Φ6 expansion bolts
- 5) Expansion gap filled with fireproof cotton

FP ROCK WOOL

Advanced Fire Safety for Every Structure

Rock wool is a highly versatile and effective insulation material that offers exceptional fire protection and thermal insulation performance.

At Bowen Pro, we proudly offer a comprehensive range of Rock wool products that are designed to meet the most stringent demands of modern construction projects.



One of the key advantages of Rock wool is its exceptional thermal insulation properties. Its dense structure and high melting point enable it to effectively reduce heat transfer, enhancing energy efficiency and creating a comfortable indoor environment.

By minimizing heat loss or gain, Rock wool insulation helps to reduce energy consumption, lower utility costs, and contribute to sustainable building practices.

Trust Bowen Pro as your reliable source for Rock wool insulation. With our commitment to excellence, superior product offerings, and exceptional customer service, we are here to provide you with the highest level of fire protection and insulation solutions.

